



Nag News

Bitter Root Back Country Horsemen

December 2024

Issue #12

In Partnership With



BACKCOUNTRY HORSEMEN MISSION STATEMENT

- To perpetuate the common sense use and enjoyment of horses in America's backcountry and wilderness areas.
- To work to ensure that public lands remain open to recreational stock use.
- To assist the various government, state and private agencies in their maintenance and management of said resource.
- To educate, encourage and solicit active participation in the wise and sustaining use of the back country resource by horsemen and the general public commensurate with our heritage.
- To foster and encourage the formation of new back country horsemen's organizations.
- To cooperate with other BCHA organizations.

THURSDAY, DECEMBER 19th, 2024 MONTHLY GENERAL MEETING

Corvallis Primary School Cafeteria

The next General Meeting will be at the Corvallis Primary School Cafeteria. This will include our **Christmas Potluck Dinner and Raffle!** Dinner will be served at 6:30 pm followed by our monthly meeting from 7:00-8:30 pm. Guests and new members always welcome. **NOTE!** If you have renewed your membership for next year, you will be able to participate in the raffle!

This month our guest speaker is George Bettas, a seasoned horse packer and backcountry expert who has spent decades sharing his wealth of knowledge as a writer for Western Hunter Magazine. For more information call Gene at: (208) 310-6326 or check out our website at: www.bchmt.org/bitterroot. Facebook: **Bitter Root Back Country Horsemen**

CONTENTS OF THIS ISSUE

P 2. President's message. Newly elected Officers and Board.
 P. 3. Pantry Partners Food Packing.
 P.4 Santa rides in Xmas tree lighting celebration.
 P. 5 Johnson fire and EF Guard Station.
 P. 6 Johnson fire severity map.
 Pp 7,8 November 21 draft General Meeting Minutes.
 Pp. 8,9. December 5 draft Board Meeting Minutes.
 P.10,11. Horse Sense
 P.12. Back Country Kitchen
 P.13. List of Officers and Board
 Pp.14,15. For sale/List of Advertisers.

**MERRY
CHRISTMAS!**

**DEADLINE FOR
NAG NEWS
Thursday, January 15th
SUBMIT YOUR ARTICLES
AND ADS TO:
djmaiyo@gmail.com**



A message from the President

Greetings fellow members and welcome to the Holiday Season. I wish you and yours the best.

Due to discord with some members of our Chapter and some health issues with me, I have decided to turn the reins, so to speak, over to others in the Chapter.

This past year has been a challenge for me and I have decided that my time and efforts would be better put to use in other places. I have worked hard to keep our chapter functioning with a high level of respect, integrity and honesty for the past 3 years. I appreciate those that have supported me in my 3 terms and hope that those that follow me will continue to uphold these.

I have enjoyed being an integral part of the Chapter and my mission, like the Chapter's mission, is still to promote

our use of equines on our trails.

I will continue to work with the USFS to help maintain this goal in the future. I believe that this mission is needed and will only fail if we all do not pursue it with due diligence.

In simpler words, if we don't keep fighting for our horse trails, we will lose them to e bikes, off road vehicles and development! So keep being informed of what is going on and please continue to be proactive about our mission.

I hope to see you on the trails in the future.

Respectfully,
Jan Bullock
Former President
Bitter Root Back Country Horsemen

Congratulations to the 2025 Elected Officers, Board and State Directors!

Left to Right

Chris Carrera 2025-2026 Board

Ed Duggan 2025 State Director

Chuck Miller 2025 Alternate State Director

Dennis Hardman 2025 Vice President

Christy Schram-Duggan 2025-2026 Board

Mary Odell 2025-2026 Board

Julie Schram 2025-2026 Board

Brad Pollman 2025 President

Elaine Driskell 2025 Treasurer

Karen Philips 2025 Secretary Co-Chair

Kathy Stoppel - Holl 2025 Secretary Co-Chair

Diane Duffie 2025 Board

Barb Walker 2025-2026 Board



Pantry Partners Food Packing Event

St. Mary's Family Center, 333 Charlo St. in Stevensville

On Friday, November 22nd, from 9am – 11am, 19 BRBCH members assembled boxes and set food items out on tables. We filled, sealed and loaded about 200 boxes in a trailer for delivery to the Pantry Partners' facility for distribution for those in need. Thank you to Barb Walker for coordinating, and all that participated in this annual event!



HO-HO-HO SANTA!

On the evening of Saturday, November 30th during the Christmas tree lighting ceremony in downtown Hamilton; Santa, accompanied by elves Jan Bullock, Gene Merrill and Dan Maiyo, rode downtown on his trusty mare Nikawa! Children loved getting photographed with Santa and gentle Nikawa (her name is River Horse in the Osage language). Thanks to Santa Ed Bullock for spreading joy to so many. The event, in its 3rd year, was sponsored by the Hamilton Downtown Association, in collaboration with Bitter Root Back Country Horsemen.



Johnson Fire and Use of East Fork Guard Station

On Monday, October 21st, Dan Maiyo met at the East Fork Guard Station with Erika Strayer, Development Recreation Manager and Karl Graff, Wilderness Ranger, Darby/Sula Ranger District, Bitterroot National Forest. The purpose of the meeting was to scope remaining barb wire that will need to be removed from the EF Guard Station property, to assess the impact of the Johnson Fire on the East Fork area for future BRBCH projects, and to see how the EF Guard Station site was utilized as an incident base.

According to Steve Brown, Darby/Sula District Ranger and Agency Administrator, a total of 8,300 acres burned. Of that,

15% or 1/3 high severity, 34% moderate severity, and 36% low severity. The East Fork trailhead experienced medium intensity burn damage. From the trailhead, approximately 3/4 mile of the trail received moderate to high burn damage.

Please see map on page 6.

The EF Guard Station site was utilized by up to 250 people consisting of fire fighters and support personnel, consisting of two teams from Montana, one team from Nevada and one team from Colorado. A helipad was also located on the site.

It was determined that approximately 1,000 feet of barb wire and posts remain on FS property, and would be a one-day project to remove the wire.



Remaining Fire Crew @ EF Guard Station



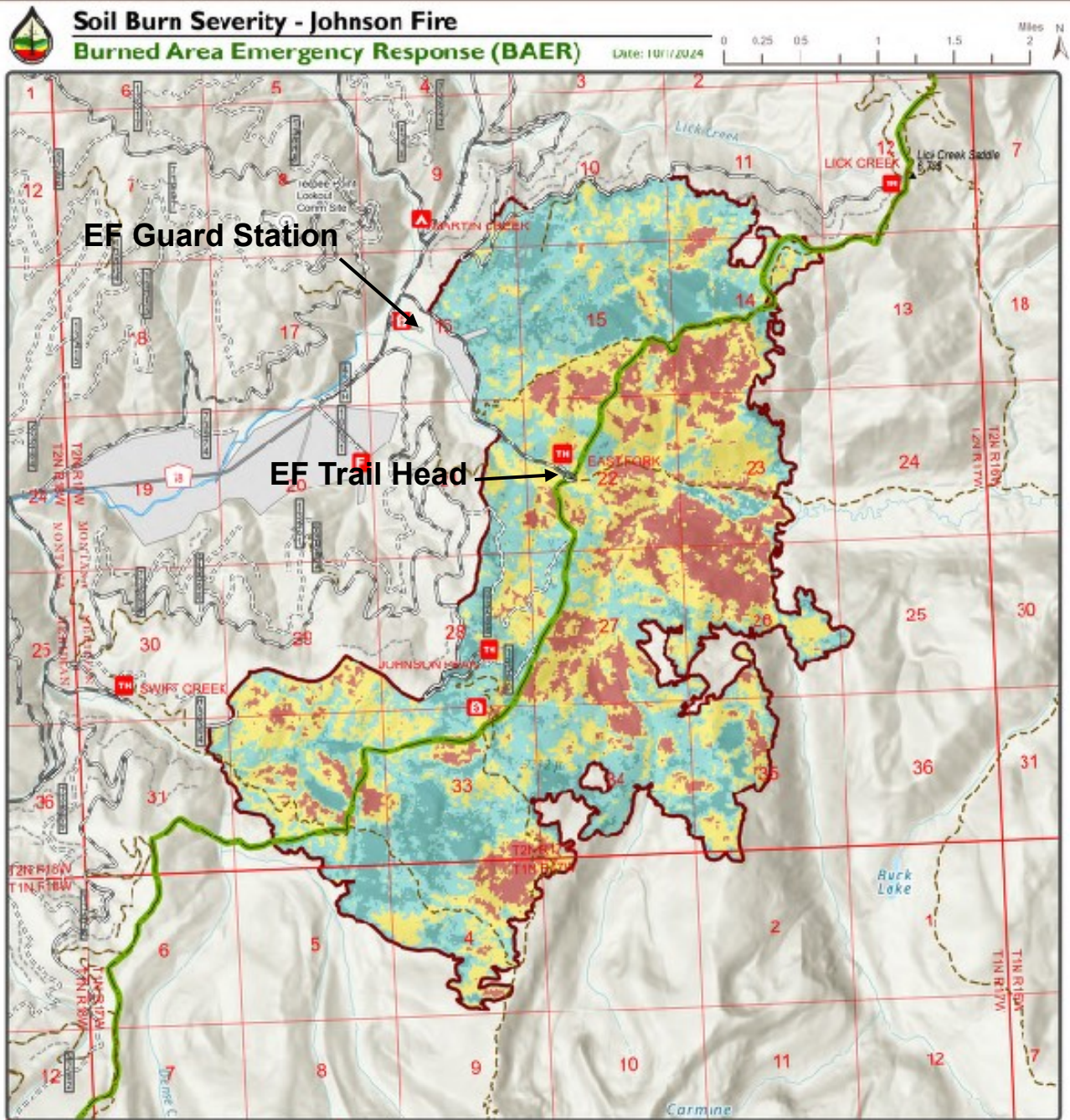
Horse Camping & Hitching Area



East Fork Trailhead, medium to high intensity burn.



Map courtesy Steve Brown, District Ranger, Darby/Sula Ranger District



IDAHO
 Idaho County

- Communication Site
- ▭ USFS Administrative Forest
- ▭ USFS Ranger District
- ▭ USFS Wilderness
- ▭ Private Ownership
- Road,Paved
- Road,Gravel
- Road,Dirt
- Road,High Clearway
- Road,Closed
- Trail/NFS Internal
- ▭ Stream / River
- ▭ PLSS Township
- ▭ Section
- ▭ Soil Burn Severity Boundary
- Soil Burn Severity

Disclaimer This product is a product of BAER rapid assessment. Further information concerning the accuracy and appropriate uses of this data may be obtained from the USDA Forest Service. The Forest Service, makes no warranty, express or implied, including the warranties of merchantability and fitness for a particular purpose, nor assumes any legal liability or responsibility for the accuracy, reliability, completeness or utility of these geospatial data, or for the improper or incorrect use of these geospatial data. These geospatial data and related maps or graphics are not legal documents and are not intended to be used as such. The data and maps may not be used to determine title, ownership, legal descriptions, boundaries, legal jurisdiction, or restrictions that may be in place on either public or private land. Natural hazards may or may not be depicted on the data and maps, and land users should exercise due caution. The data is dynamic and may change over time. The user is responsible to verify the limitations of the geospatial data and to use the data accordingly.

**BITTER ROOT BACK COUNTRY HORSEMEN
DRAFT GENERAL MEETING MINUTES,
NOVEMBER 21, 2024**

The November 2024 general meeting of the Bitter Root Back Country Horsemen (BRBCH) was called to order by President Jan Bullock at 7:12 pm. The meeting was held at the Corvallis Primary School cafeteria. Approximately 49 members were present. There was an officer and board quorum. Chuck Miller led the Pledge to start the meeting. There were 2 guests, Cindy and Bill Gracely.

2024 Elections: Bonnie Morgan asked candidates to say a few words about themselves. She conducted the election process for President, Vice President, Secretary, Treasurer, one Director to finish the 2024-2025 term, five Directors for the 2025-2026 term, State Director for 2025-2026, and the 2025 Alternate State Director. Ballots were completed via email or in person at the meeting. Per election protocol, Bonnie asked for nominations from the floor three times for each position. The ballot results are as follows.

For President, Brad Pollman and Ed Bullock were nominated. There were no nominations from the floor. **Nancy Pollman motioned and Kathy Stroppel-Holl seconded that nominations for President be closed. Motion carried.** After tallying the ballots, Brad was voted in.

For Vice President, Dennis Hardman and Tony Westbrook were nominated. There were no nominations from the floor. **Julie Schram motioned and Helen Engle seconded that nominations for Vice President be closed. Motion carried.** After tallying the ballots, Dennis was voted in.

For Secretary, Karen Philips and Kathy Stroppel-Holl were nominated to serve as co-secretaries. There were no nominations from the floor. **Brad Pollman motioned and Christy Schram-Duggan seconded that nominations for Secretary be closed. Motion carried.** After tallying the ballots, Karen and Kathy were voted in as co-secretaries.

For Treasurer, Elaine Driskell was nominated. There were no nominations from the floor. **Christy Schram-Duggan motioned and Kathy Stroppel-Holl seconded that nominations for Treasurer be closed. Motion carried.** After tallying the ballots, Elaine was voted in.

For 2025-2026 State Director, Ed Duggan was nominated. There were no nominations from the floor. **Diane Duffie motioned and Nancy Pollman seconded that nominations for State Director be closed. Motion carried.** After tallying the ballots, Ed was voted in.

For 2025 Alternate State Director, Chuck Miller was nominated. There were no nominations from the floor. **Christy Schram-Duggan motioned and Nancy Pollman seconded that nominations for Alternate State Director be closed. Motion carried.** After tallying the ballots, Chuck was voted in.

For the one 2024-2025 Director, Diane Duffie was nominated. For the five 2025-2026 Directors, the following candidates were nominated: Chris Carrera, Mary Odell, Julie Schram, Christy Schram-Duggan, and Barb Walker. There were no nominations from the floor. **Kathy Stroppel-Holl motioned and Julie Schram seconded that nominations for the 2024**

-2025 Director and the 2025-2026 Directors be closed. Motion carried. After tallying the ballots, the 2024-2025 Director is Diane, and the 2025-2026 Directors are Chris, Mary, Julie, Christy, and Barb.

All newly elected folks, as well as any members, were invited to attend the Dec 5th Board meeting at the Daly-Leach Community Room at 7pm.

BUSINESS

Minutes: The October minutes were printed in the November Nag News; there were no corrections. **Christy Schram-Duggan motioned and Julie Schram seconded to accept the October general meeting minutes. Motion carried.**

Treasurer's Report: Barb Walker presented the November treasurer's report. There were no updates. **Ed Duggan motioned and Rebecca Banks seconded to accept the November treasurer's report. Motion carried.**

CORRESPONDENCE AND ANNOUNCEMENTS

Safety Moment: Carol Johns reported that FWP passed an amendment that setbacks for traps during wolf trapping and furbearing trapping seasons are eliminated from closed roads, except for Nez Perce, Lost Horse, Skalkaho, and Skalkaho-Rye Roads. Be aware of traps near roads and trails while you are winter recreating. Carol will email the actual proposal to members.

December Meeting Members Raffle: Leslie Conner-Maiyo is collecting items for the members' raffle at the December meeting. Be sure to renew your membership in order to get a raffle ticket at the meeting. The Shirt Spot, Tammany Vet, Cowpoke, and CTC Boot Repair have provided raffle items.

Haven House Pass the Hat: Jan Bullock passed around her personal hat for Haven House, the Hamilton food pantry for which the chapter annually collects a cash donation. Members donated \$274 for this food bank. Jan will deliver this to Haven House on Friday, 11/22.

COMMITTEE REPORTS

Grants: Brandi Ashford (our new committee chair) was absent but her committee members are Kathy SH, Mary Odell, and Ed Duggan.

Issues: No report.

Projects: Dan Maiyo reported that Dan Brandborg is stepping down from his project chairmanship so we will need to fill that position. Dan M. reported that on the Johnson Fire, our previous efforts removing barb wire from the East Fork Guard Station campground area were much appreciated by the fire crew members who were stationed there. Mark Smith will let us know what East Fork area trails will be potential projects for 2025. There is additional barb wire along the FS border to remove. All trails in the East Fork area have fire damage.

Continued next page

(General Meeting minutes continued)

State Directors: Chuck/Brad/Ed: The next State meeting will be Dec 14th in Missoula at the fairgrounds, and it's also the Missoula BCH Christmas party. Members are welcome to attend the meeting and the party. The BCHMT newsletter was just published, and it reports that the FS budget freeze will impact seasonal hiring. The Upper Clark Fork and Mile High chapters are combining. The Holland Lake Lodge is under a potential new purchase offer, with fewer changes considered there.

Education & Training: Bonnie asked members to think about training they want for 2025, including on Defensive Horsemanship topics. Joan Scheffer and Jan are the first aid trainers for our chapter. FA training dates are coming. Zack Phillips, a new member, is a certified first aid trainer.

Membership: There are currently 84 memberships, and 134 members. Renewals have started for 2025.

Outreach: Karen Philips said that the Pantry Partners Christmas Food Box Pack we do is a positive community outreach for those in need. Thank you to all members who participate.

Program: Monica said the December program speaker will be George Bettas, who will discuss hunting on horseback. He wrote the book The Hunting Horseman, which covers every aspect of hunting with equines, from packing and care of stock to the best gear available for the job.

Sunshine: If anyone knows of a member who needs a get well, congratulations, or condolence card, let Jenna Wright know. Jenna's email and phone number are listed in the chapter membership directory.

Constitution Committee: Dan Maiyo said the next meeting is Sunday, Dec. 8, at the Etna Fire Station. The committee continues work on Art. 2, Section 6. When finished, the recommended revisions will be presented to the board.

OLD BUSINESS

Pantry Partners Christmas Food Box Pack: Barb Walker said box prep and packing is Friday, Nov 22, 9-12, at the St Mary's Family Center, 333 Charlo St. in Stevensville. A sign up sheet was passed around. About 200 boxes will be prepped and packed.

NEW BUSINESS

Christmas Santa: Jan reported that they have not been able to get in touch with Hamilton Downtown Association. It was recommended that they contact the Hamilton mayor and the Chamber of Commerce to see if they want to have Cowboy Santa again this year.

Horse Training Clinics: Brad reported that Lonnie and Wade Murphy are offering horse training workshops. They have done these before and they have been well received. Members expressed interest in this opportunity. There would be a discount offered for BCH members; Brad will obtain a sample flyer.

OTHER BUSINESS

Budget Committee: Earl Philips and Cherie Barton will work with Gene on the 2025 budget. Gene asked for ideas to help with compiling the 2025 budget. Need input by the Dec general meeting.

Next Meeting: December 19 at the Corvallis Primary Cafeteria, potluck at 6:30, meeting at 7:00 pm.

Helen Engle introduced herself and reported on the newly expanded Murdoch's, which is now 60,000 sq. feet.

December Coffee: Bonnie Morgan; Hot water: Christy Schram-Duggan

Gene Merrell motioned and Bonnie Morgan seconded to adjourn the meeting at 8:27 pm. The motion carried.

Karen Philips, Co-Secretary BRBCH

BITTER ROOT BACK COUNTRY HORSEMEN

DRAFT BOARD MEETING MINUTES, DECEMBER 5, 2024

The December 2024 Board meeting of the Bitter Root Back Country Horsemen (BRBCH) was called to order by Jan Bullock at 7:05 pm at the Daly-Leach Community Room. Present were President Jan Bullock, Vice President Dan Brandborg, Treasurer Barb Walker, and Co-Secretaries Karen Philips and Kathy Stroppel-Holl; Directors Cherie Barton, Carol Johns, Lionel Lavallee, Dan Maiyo, Brad Pollman (also State Director), Joan Scheffer, and Mark Wright; State Director Chuck Miller, Alt State Director Ed Duggan, and Past President Gene Merrell. Absent were Directors Joe Kirkland and Travise Grinnell. There was a Board quorum. Committee chairs/members present: Bonnie Morgan, Diane Duffie, Dennis Hardman, Christy Schram-Duggan, Julie Schram, and Chris Carrera. All led the Pledge.

BUSINESS

Minutes: The November 2024 minutes were published in the Nag News. There were no updates. **Lionel Lavallee motioned and Joan Scheffer seconded to accept the November minutes. Motion carried.**

Treasurer's Report: Barb provided account balances. There were no updates. Barb, Brad, and Elaine will work on the signature process necessary for the transition to a new treasurer. **Lionel Lavallee motioned and Mark Wright seconded to accept the December treasurer's reports. Motion carried.** Barb brought the Trail West form for new 2025 officer signatures. A laptop for the new treasurer was discussed (no laptop has been purchased for the secretary – they have used their own). Lionel suggested \$1500-\$2000 is needed for a Windows PC—he will research the cost and the best option for our needs. This will be on the January 2 Board meeting agenda for discussion and presentation to the membership.

CORRESPONDENCE AND ANNOUNCEMENTS

Welcome to New Officers and Directors: Jan introduced our new officers and directors and thanked them for stepping up.

Dec General Meeting Raffle Items: Joan and Dan M. discussed items donated so far from Tammany Vet, CTC, Shirt Spot, and Cowpoke Ranch Supply.

Grants: Kathy SH reported for Brandi Ashford that the committee will meet Dec 7, at Etna Fire Station at 3:00. Ed Duggan, Christy Schram-Duggan, Brandi Ashford (chair), Kathy Stroppel-Holl, and Mary Odell are committee members.



(Continued next page)

(Board minutes continued)

Projects: Dan M met with Steve Brown and Erica Strayer regarding the remaining barb wire that needs to be removed at the East Fork Guard Station. He tentatively reserved 6/21-6/22 dates for this project. Mark Smith has secured funds to repair the East Fork trail complex, and he will let us know if our help is needed. Dan B said we need to define a project to apply for grants and asked if this project would qualify. We need to develop a project that would merit a grant. Brad suggested we apply for a 2026 grant, giving us time to develop a good project that could possibly win a grant. Mark Wright suggested doing recon on trails this summer to prepare for the following year. Kathy heard there is a need to add rolling dips to the Coyote Coulee trail system. The number of FS trail crews will determine what the project needs are and what we can accomplish. Dan B reminded us that we will need a new project chair starting in 2025. This will be brought up at the Dec general meeting. Mark said he would serve on the project committee.

Issues/Public Lands: Carol said on Monday there was a virtual meeting with John Chepulis and other issues chairs. BLM will now accept FS saw certifications from volunteers. EXPLORE Act is pending and it emphasizes working with volunteers. The FS hiring freeze is impacting our work. E-bike lobbyists are pushing hard for access to non-motorized forest trails and the Tahoe National Forest has considered accepting them on their forest. BCHA is watching this and will go to court if needed to fight this. Traditional trap setbacks were eliminated by FWP on most gated county and forest roads. At Lake Como and Bass Creek areas the setbacks remain as usual. Discussion occurred on the subject of trapping setbacks. Because Sheep Creek mine owners haven't submitted a plan of operation, FS scoping has been delayed.

State Directors: Chuck said the state meeting is at 10 a.m. on Dec. 14, at the Missoula Fairgrounds, first building on the right, followed later by a 6:30 potluck, with music. Brad said at the meeting they will discuss the state convention in Helena (3/14-16), and he will bring convention registration packets to the chapter. At the meeting they will discuss our FS cost-share agreement, but with the FS hiring freeze in place everything is up in the air.

Membership: New and renewal memberships were presented. We currently have 51 members 27 memberships for 2025. **Brad Pollman motioned and Lionel Lavallee seconded that we approve several new and renewal members. Motion passed.**

Outreach & Program: Karen thanked Ed Bullock, our Christmas Cowboy Santa, and his trusty elves, Jan Bullock, Dan Maiyo, and Gene Merrell, for their excellent outreach to the community! George Bettas, our December 19 speaker, will talk about hunting on horseback.

Education & Training: Bonnie said first aid classes will be scheduled soon with dates to be announced in January. Connie Long has equipment to potentially donate, and that will be discussed at the state meeting. Bonnie would like two obstacle course classes following the defensive horsemanship demonstration.

Constitution Committee: Dan Maiyo reported the next meeting is December 8 at 3:00, at the Stevensville Fire Hall.

OLD BUSINESS

Pantry Partners Food Pack: Barb said 19 members taped and filled more than 200 food boxes in less than two hours. This was another successful food pack! On Monday, Nov. 25, Jan dropped off the \$274 we collected for Haven House at the November general meeting.

Cowboy Santa: This was a successful outreach event, but Ed B's

horse may not be up for it next year. We need to start looking for another horse and rider for next year.

Mileage Reimbursement: Jan discussed the mileage reimbursement. There were 2,913 miles recorded for 2024 projects. Mileage reimbursement will come from BCH MT after the FS pays the state through the cost share agreement. The Duggans have donated their 2024 mileage. Reports were sent in on time to the FS and BCH MT, but they need to be presented to the Board in the future before submittal.

Google Drive: Lionel reported that they have a setup of quick links so Board members and committee chairs can access files quickly and have the ability to add to files. Membership information is not accessible to anyone except the Google drive administrator and the membership chair. Security levels are being added by Tim Meyer. Lionel will send an email soon regarding access.

NEW BUSINESS

Thank you notes for raffle donors: Dan M circulated four cards to Tammany Vet, CTC, Shirt Spot and Cowpoke Ranch Supply for their generous donations.

Audit Committee: Joe K, Sean K, Leslie, and Judy P were on the committee last year. Jan will check with Joe K.

Budget Committee: Gene said he needs input from committee chairs and officers. The committee includes Barb Walker, Earl Philips, and Cherie Barton.

BRBCH 50th Anniversary: Gene said 2025 is the 50th anniversary and the new leadership needs to decide if they want to plan a special event. This will be confirmed and discussed later.

2025 State Convention Delegates and State Auction Item: Kathy said that convention delegate spots are offered to the Board members first and there are 3 slots taken by the state and alternate state directors. That leaves 5 slots available for other Board members. If there are resolutions to be voted, it is important to send all eight delegates.

State Dues and BCHA Donation: A request for \$5 per membership would be voluntarily sent to BCH MT (similar to what was done in 2023), and that money will be donated to BCHA. This money would come from our operational budget. We need the secondary memberships excluded from the total memberships we pay for state dues (no state or national dues are collected from secondary memberships). What we pay for state and national dues is only for primary memberships. **Karen Philips moved and Brad Pollman seconded that we approve sending \$5 per primary membership to BCHMT to donate to BCHA for dues increase. Motion passed with one nay.** This seconded motion will be presented to the membership at the December 19 general meeting.

OTHER BUSINESS

Mark Wright thanked everyone, including officers, directors and committee chairs, who have served on the Board in 2024 and put in many volunteer hours. Your time and effort are much appreciated!

Lionel Lavallee motioned and Mark Wright seconded to adjourn. Motion carried. The meeting ended at 8:52 pm.

Karen Philips, Co-Secretary BRBCH

Horse Sense - Sponsored By:



We carry all your equine vaccination and deworming needs, plus a large supply of animal health products. Visit us in Corvallis or Deer Lodge, on Facebook, or www.cowpokeranchsupply.com
406-961- 4917 Monday-Friday 8 – 5:30 Saturday-9 – 4:00

Choosing Hay When Weather Hurt the Harvest

This article originally appeared in Eclectic Horseman Issue No.9

All hay is not created equal. Roughage is vital. Hay is the best way to provide roughage if you can obtain and afford it. Low-nutrient roughages can be used. Choose carefully to keep your horse healthy .

Hay as Primary Feed

Most horses' diet needs can be met primarily with pasture or hay. Mature horses in light work may not need grain; they can usually get all the nutrients they need from good hay, salt and water. This assumes that your pasture is producing high-quality forage or that you can grow or purchase good-quality, nutritious hay.

Don't mistake the greenery or dried plants (in winter or drought) of your pasture for feed. Walk around in the field and look to see what percentage of these plants is edible. Weeds grow more easily than desirable plants, particularly when the weather is not ideal. Some weeds are toxic, and while horses generally won't eat these if there is something better to eat, you don't want him hungry enough to try them. You may need to feed hay other than during the winter.

Hay alternatives like chopped hay products and hay cubes may be more nutritious than the hay you can purchase and can be expensive. Even if you choose to feed them, your horse still needs the roughage equivalent of some long-stemmed hay each day.

Providing roughage twice a day is considered by many to be the minimum. We want the horse to have something to chew on for as much of the day as our schedules allow.

Roughage

The horse's digestive tract is designed to process relatively low-energy and low-protein forage around the clock. Wild horses spend a great deal of time eating, and they choose their forage carefully from what is available. When we take over the responsibility of feeding, we must provide roughage that will keep the horse's digestive tract working. Without adequate roughage, digestive disturbances like colic can develop, plus your horse will be more likely to chew on other items—like the wooden fence or the barn.

Providing roughage twice a day is considered by many to be the minimum. We want the horse to have something to chew on for as much of the day as our schedules allow. If you care for your horse at home, throw him a flake of hay when you check on him last thing at night. If you share duties, arrange to have one person feed hay in the morning and the other in the evening. If the only hay available is low in nutrients, it is still important. We can make up nutrient requirements with other feeds.

Diet Changes

Any diet change between hay types should be as gradual as possible. This allows the gut bacteria to adjust and minimizes digestive upset. Plan ahead so you still have some of the old hay left when you purchase the new. If you have to shop around and use different sources (whose hay is different), or if you run out between loads because of availability, start with smaller amounts for the first few feedings to let your horse get used to it gradually.

Hay Types

The two main types of hay fed to horses are grass and legume. Examples of common grasses are timothy and Bermuda; common legumes are alfalfa and clover. Grass hay is generally lower in protein and other nutrients than legume hay. Horses don't necessarily need legume hay, but the legumes in a grass-legume mix can provide valuable protein. If you usually feed a legume like alfalfa but can't get it, a grass-legume mix (like timothy with some clover) can be fed along with a protein supplement. Even plain grass hay can be supplemented to total the protein your horse used to get from alfalfa. While straw is usually considered horse bedding rather than feed, many horses will eat it. In times of serious drought, when suitable hay is not available, straw can provide roughage as long as it fits the other good hay criteria (no dust, mold, weeds, etc.).

Color

Hay color can show hay nutrient content, though it's not an absolute indicator. The loss of nutrients is somewhat linked to the loss of the desirable green color. Bright green is best; green is desirable over yellow or brown. If you are feeding hay for its roughage content, and recognize the horse's need for additional nutrients, feeding brown hay is acceptable.

Texture

Choose soft, pliable stems and leaves over coarse and brittle ones.

Aroma

Good hay has a fresh, sweet, pleasant scent recognized by horsemen everywhere. Avoid musty-smelling hay.

Leaves and Stems

The more leaves the better, relative to stems, because the leaves hold the majority of the nutrients in the plant. If you are feeding hay for its roughage value, stemmy hay is OK as long as your horse will eat it. Fine stems are preferable to coarse ones because they are generally more palatable and nutritious, but there is nothing harmful in coarse stems if that is what is available.

(Continued Next Page)

(Choosing Hay Continued)

Palatability

Whatever you choose, your horse has to eat it. If he wastes 90 percent of it by trampling it around his paddock, you're not getting your money's worth. If you have a choosy horse, he may refuse to eat the new, less tasty, hay. As long as you've chosen healthy hay (some horses won't touch dusty or moldy hay, either), persist in offering him small quantities of the new hay until he eats it. Whenever your best choice is less palatable hay, feed more than your horse will clean up. Your horse will pick through the hay; while this appears wasteful, it allows him to avoid the occasional weed or a patch that doesn't smell as fresh. Consider this as insurance against his eating something he shouldn't.

Stage of Maturity

The average stage of maturity of the plants at harvest is perhaps the most important factor in the nutrition available to the horse. Ideally, hay is cut just as grass heads begin to show and just prior to legumes blooming. This maximizes nutritional content. While preferable, this is not always possible. Dry weather influences the maturation process. There is nothing wrong with hay cut at earlier or later stages, as long as we recognize that it is less nutritious. It is still valuable as roughage and contributes to the total nutrition.

Harvest Weather and Handling

Rain falling on cut-but-not-yet-baled hay leaches out nutrients. Heavy dew causes haymakers to turn the hay additional times before it is dry enough to bale. Drought gives us dry, possibly immature, plants. When leaves are broken and lost during harvest, so is nutrition.

Hay put up too wet will probably mold—usually early in storage. Moisture content that allows the stems to bend crisply, but not crack and break, is ideal (this is 10—15 percent moisture content).

If your only choice is hay harvested a little too wet, store it with as much air circulation as possible around the bales, feed it as soon as possible, and check carefully for mold every time you feed.

The "Cutting"

Horsemen and hay dealers often generalize that hay from the "first cutting"—the first harvest of the summer—is better than second (or third) cutting hay. Some parts of the country don't get more than one cutting. In times of drought, the number of harvests decreases. (This is the main reason that the price increases.)

It is best to look at the hay itself, rather than rely on the knowledge of which cutting it was. While the first cutting of the year is often more nutritious, it may have more weeds, or may have gotten rained on during harvest; both decrease its value.

Storage

If hay is stored well—dry and out of the weather, and where access by rodents is restricted—it will likely lose color and nutrients with age but is still healthy feed. If the hay gets wet during storage, moldy areas will appear—so sort through each bale as you feed. Last year's hay can still be a good source of roughage if it was stored well.

Avoid Dust, Mold, Weeds and Trash

Do not accept dusty hay. Dust causes respiratory irritation, which can be followed by a bacterial infection, and it may pro-

mote allergy development. White dust is usually fungal spores from mold.

When water is available, slightly dusty (from leaf breakdown during handling, not from mold) hay can be used after soaking each portion for a few hours in a clean muck bucket or plastic trash can until thoroughly damp. The soaking container must be dumped and cleaned between uses or any remaining hay will mold. Spraying the hay with a hose is not effective in penetrating down to the dust.

Absolutely do not feed moldy hay. Exposure to hay molds can cause lifetime respiratory disease like chronic obstructive pulmonary disease (COPD, also called heaves). Hay molds may also contain toxins. Identify mold by its pungent odor and the tendency of hay to pack together rather than separate easily into flakes. White mold and dusty spores may or may not be visible. Try to trade moldy hay to a cattle rancher or dairy herder, since cattle can eat hay which horses cannot.

Some weeds are a nuisance; others are toxic. Good hay contains a minimum of weeds. The more roughage you provide (within reason), the more picky your horse can be; he should avoid most weeds.

Trash sometimes gets baled with hay, so it's a good idea to keep an eye out for it while feeding.

Raffle Item!

75 Gallon Water Tank donated
by Cowpoke Ranch Supply!



BACKCOUNTRY KITCHEN
SPONSORED BY:



The Shirt Spot

1704 N 1st St Unit C
Hamilton MT 59840

The Shirt Spot is new to Montana since April 2023, but has over 20 years' experience in the industry! Services offered include printing, embroidery, sign banners, stickers and business cards. Quality clothing including tee's, tank tops, and ladies crop tops are offered at a reasonable price. Also offered is a huge variety of headwear ready for embroidery!

Back by popular demand! Just in time for Christmas!

RHUBARB DREAM BARS!

Crust:

- 2 C flour
- ¾ C powdered sugar
- 1 C butter
- Mix crust and press into 9" x 13" pan. Bake at 350° for 15 minutes. (Do not overbake at this stage because it will be baking a lot longer later on.)

Filling:

- 4 eggs, hand-beaten
- 2 C sugar
- ¼ C flour
- ½ t salt
- 4 C rhubarb, chopped
- Combine eggs, sugar, flour, and salt. Mix (do not beat). Fold in rhubarb. Pour on top of baked crust. Bake at 350° for 40-55 minutes until set and edges start to brown.

Exclusively at the Shirt Spot! Embroidered Bitter Root Back Country Horsemen logo on in-stock shirts, vests and jackets or a vest/jacket of your own choice. Personnel Wyoming Traders vest shown. Custom thread color available. Inquire for pricing. Caps offered in a variety of styles and colors! \$25/cap or \$20/each/10 caps. **Tell the Shirt Spot that you saw this notice in this newsletter and receive a discount!**

Show your support for our BCH Chapter!



2024 Committees	2024 Chairs & Members
Audit	Joe Kirkland, Judy Posey, Bonnie Morgan Ed Bullock
Audio-Visual Equipment	Gene Merrell, Jan Bullock, Barb Walker
Budget	Ed Duggan/Christy Schram-Duggan
Education	Bonnie Morgan, Leslie Conner-Maiyo,
Election & Nominations	Ed Duggan
Equipment & Inventory	Christy Schram-Duggan
Fair and Reports	Ed Bullock
Advertising	Dan Brandborg, Diane Duffie, Barb Walker
Grants	Tim Meyer
Historian	Carol Johns, Kathy Stroppel-Holl
Issues	Joan Scheffer
Memberships	Dan Maiyo
Newsletter	Monica Stanton
Parliamentarian	Dan Brandborg
Programs	Travise Grinnell
Projects	Jenna Wright
Social Marketing	Jan Bullock, Dan Maiyo
Sunshine	Bonnie Morgan
Trail Rides	Nancy Pollman
Training	
Website Design	

Bitter Root Backcountry Horsemen Officers and Board

Chapter officers				
Position	Name	Term	Contact	
President	Jan Bullock	2024	907-242-9853	
Vice President	Dan Brandborg	2024	406-381-5643	
Secretary	Kathy Stroppol-Holl/Karen Phillips	2024	Kathy 720-244-2943, Karen 406-369-0725	
Treasurer	Barbara Walker	2024		
Board Members	Term	State Director	Term	BCHMT State Chairman
Travise Grinnell	2023-24	Chuck Miller	2023-24	Mack Long
Carol Johns	2023-24	Brad Pollman	2024-25	
Joe Kirkland	2023-24			BCHMT Vice State Chairman
Brad Pollman	2023-24	Alt. State		Sandy Himmel
Cherie Barton	2023-24	Director		
Lionel Lavallee	2024-25	Ed Duggan	2024	
Joan Scheffer	2024-25			BCHMT National Directors
Dan Maiyo	2024			Brad Pollman
Mark Wright	2024-25	BRBCH Past		John Chepulis
		President		Alt. National Director
		Gene Merrell		Chuck Miller

FOR SALE: Living Quarter Trailer
SOLD!!!



FOR SALE: Heavy duty scalloped harness leather old timey headstall, lined. Brass hardware. Will fit large head horse or mule. \$80.00
Contact Dan Maiyo (208) 940-2887


• SCREEN PRINTING & EMBROIDERY •



The Shirt Spot
Montana

☎ 406-389-4096

📍 1704 N. 1ST STREET. STE C
HAMILTON, MT 59840




CRAZY HORSE CONSIGNMENT
Tack and Western Boutique
6555 Hwy 12 W. Lolo, Montana
406-273-4226
Bonnie
370-4223
Johanna
370-0459
www.crazyhorseconsignment.com
P.O. 1642 Lolo, MT 59847

Grass Fed Beef

Locally Grown
Fully processed or by the ¼, ½ or whole animal
Cattle rotated to fresh grass daily
No growth additives or chemicals including fertilizers

Preorder yours for October delivery or stop by our barn for individual cuts anytime

Email: dan@brandborg.com or zach@skalkahostables.com
Or call Zach at 406-361-0997 784 Arena Road, Hamilton



Respectful Farewell
On-Site Burial

Humane & Responsible
On-Site Burial for your Equine.

Ron - 406-207-0066

COW POKE RANCH SUPPLY



For All Your Farm & Ranch Needs!

1308 Eastside Hwy. Ph: 406-961-4917
 Corvallis, MT 59828 Fx: 406-961-4917
www.cowpokesupply.com Email: cowpoke@montana.com

Turnkey Construction Inc  Stevensville, Montana

25+ Years Experience

RADIANT IN-FLOOR HEAT SYSTEMS



Brad Pollman 406-546-6492
TurnkeyConstructionInc.com

DARRELL REESE, WMS, AIF®
 Founder, CEO, SIG
 Financial Advisor, RJFS

SAGEMONT INVESTMENT GROUP **RAYMOND JAMES**

225 West Main Street, Suite B
 P.O. Box 1887
 Hamilton, MT 59840
darrell.reese@raymondjames.com
sagemontinvestmentgroup.com

O 406.363.4293
 C 713.851.1764
 T 800.800.6766
 F 406.363.4303



Motorcycle Garage

service and parts
406-360-6520



SWEETWATER MERCANTILE

BEADS and GIFTS

2130 N 1st St • Hwy 93
 Hamilton, MT 59840 • 406-363-3215
sweetwatermercantile@gmail.com

Find us on Facebook



BAR MW MEATS

410 QUAST LANE CORVALLIS, MT

barmwmeats.com 406-961-0059



ONE MISSION
Farrier Service LLC

Myron Miller
 Cell: (406)-550-2148
Serving the Bitterroot Valley and beyond



Carrie & Travis Van Dyke
406-381-4975

CTC
 BOOT & SHOE REPAIR

Used Boots
 Gently Worn
 Comfortably Priced

107 State Street • Hamilton, MT 59840



Bitterroot Hoof Boots

Brandi Ashford
 Boot Fitting, Sales, Trials

307-575-2695
bitterroothoofboots@gmail.com

Check us out on Facebook!



2533 Pleasant View Drive
 Victor, MT 59875
 email: lifelinefarm@msn.com
www.lifelinefarm.com

Lifeline Creamery & Farm Store
406-642-9717

FRESH • LOCAL • ORGANIC

Organic Milk, Cheese, Butter, Beef, & Pork



Bitter Root Back Country Horsemen



MERRY CHRISTMAS

NEXT BRBCH MEETING

Thursday, December 19th, 2024

Corvallis Primary School Cafeteria

Dinner at 6:30pm Meeting at 7:00pm

Visit our Website:

bchmt.org/bitterroot

Bitter Root Back Country Horsemen
P.O. Box 1083
Hamilton, MT 59840