



Nag News

Bitter Root Back Country Horsemen

August 2025 Issue #8

In Partnership With



BACKCOUNTRY HORSEMEN MISSION STATEMENT

- To perpetuate the common sense use and enjoyment of horses in America's backcountry and wilderness areas.
- To work to ensure that public lands remain open to recreational stock use.
- To assist the various government, state and private agencies in their maintenance and management of said resource.
- To educate, encourage and solicit active participation in the wise and sustaining use of the back country resource by horsemen and the general public commensurate with our heritage.
- To foster and encourage the formation of new back country horsemen's organizations.
- To cooperate with other BCHA organizations.

THURSDAY, AUGUST 21St, 2025 MONTHLY GENERAL MEETING

LAKE COMO ROCK CREEK HORSE CAMP

The next General Meeting will be at the Lake Como Rock Creek Horse Camp Area. Drive 13 miles south from Hamilton on Hwy 93 to the intersection of Lake Como Road, turn west and drive 3.5 miles. Turn left into the campground (located on a stretch of road between the beach turn off and boat launch turn off).

This month Christy Schram -Duggan will be talking about the upcoming fair. For more information contact Brad Pollman: 406-546-6491. Check out our website at: www.bchmt.org/bitterroot or Facebook: **Bitter Root Back Country Horsemen**.

THIS ISSUE

P. 2. Presidents message, Coyote Coulee project recap
P. 3. East Fork Guard Station project recap.
P. 4. Boulder Creek Project recap.
P.5 -6 Draft General Meeting Minutes
Pp.6-7. Draft Board Meeting Minutes. Chief Joseph Trail ride report
P. 8. Horse Sense (sponsor)
P.9. Back Country Kitchen (sponsor)
P.10. Officers and Board
P.11. Advertisers
P.12. Items for sale. Chief Joseph Trail Ride photos

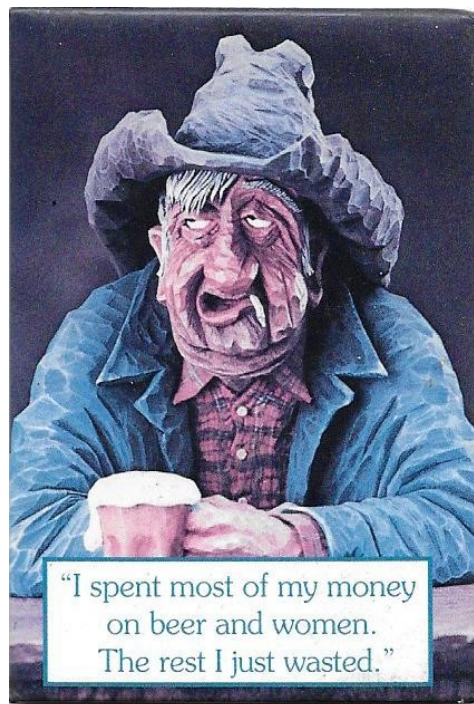
DEADLINE FOR NAG NEWS

Thursday, Sept 11th
**SUBMIT YOUR ARTICLES &
ADS TO:**
djmaiyo@gmail.com

Editor's Note:

Thank you Dennis Hardman for assuming responsibility for care and storage of Chuck Wagon!

Newsletter: Beginning 2026 I will be looking for a volunteer to take over this newsletter. I've been your editor since 2022. Some experience with Microsoft Word and Publisher is desirable. I will be pleased to work with you in the transition.



"I spent most of my money
on beer and women.
The rest I just wasted."

A Message from the President

Hi Folks,

Can't believe how fast time seems to be going. We have had a good trail project season and there is still some more to do.

Dennis and I will check in with Bob at FWP to get permission to check the trails at Calf Creek; that should wrap up projects for this year. I want to thank all the project volunteers, especially the project leaders, their co-leaders. I hope you appreciate the reduction in paperwork this year. I am also very happy we didn't have any injuries! Let's stay safe out there.

Our only fundraiser is coming up in a couple of weeks and we sure can use your

help. Nancy and I have signed up for 8 shifts so far. The chapter supported doing this fundraiser and it's now time for all to help.

PLEASE STEP UP AND SIGN UP FOR A SHIFT OR TWO TO WORK THE FAIR! And ask your friends and neighbors to give us a hand in welcoming the public to the Ravalli County Fair. Remember to tell them they not only get in to the fair that day for free but get a ticket for another day for them or to share with someone else. You can sign up on our website:

<https://bchmt.org/wp/bitterroot/fair-info/> or call Bonnie Duggan at 406-544-8925.

Well, I am off to take the grandkids for some camping and canoeing at Lake Como. See you at the fair!

Happy trails, Brad Pollman

Project recap Coyote Coulee

The second project of the season was at Coyote Coulee Saturday, June 21. The project leader this year was Julie Schram.

The 1st loop had the most waterbars (52!), which was worked on by hikers and riders. Another group of riders went to the connector (7 WBs) then on to the 2nd loop (25 WBs).

Thank you Julie for preparing the delicious taco chile and all the fixins!

Thank you to all that participated in this project!



Project Recap

East Fork Guard Station Barb Wire Removal

At noon Friday July 11th and Saturday July 12th, at the historic East Fork Guard Station, the BRBCH barb wire rolling A-Team once again met project leader Dan Maiyo to roll up ¼ mile of 4-strand barb wire and pull metal t-stakes that had been dragged hither and thither by wildlife around the site for years. The wire followed a Forest Service and private property boundary parallel to the little East Fork Road which provides access to the Anaconda/Pintler Wilderness trailhead. Saturday morning after breakfast we began work at 8:30 am. We completed the work by noon and departed the site after lunch.

The project marks the completion of a 3 year effort to remove barb wire from the Guard Station property, thereby providing a safe environment for wildlife and visitors.

Thank you Kathy Stopples-Holl for preparing a delicious Friday lunch and dinner, Dorothy and Chris Carrera, Julie Schram, Leslie Conner-Maiyo and Mark Wright!



Boulder Creek Project Recap:

On Friday July 18, BRBCH members met Project Leader Chris Carrera at the Sam Billings Boulder Creek Campground trailhead to begin work. Dennis, Diane, Leslie, Kathy and others helped Chris and Dorothy set up the canopy and prepare the Chuck Wagon. Bonnie and Joan hiked the trails and restored 23 water bars. Saturday the 19th Mary and granddaughter Bella, worked trails, Julie and Ed worked trails and cleaned up the campground, the water hole access was improved. Chris walked and trimmed the trail up to the falls Chris and Dorothy prepared breakfast, lunch and dinner.

Thank you to all who participated!!



BITTER ROOT BACK COUNTRY HORSEMEN
DRAFT GENERAL MEETING MINUTES,
JULY 17th, 2025

The July 2025 general meeting of the Bitter Root Back Country Horsemen (BRBCH) was called to order by Vice President Dennis Hardman at 7:06 p.m. The meeting was held at the Coyote Coulee Trailhead. Approximately 23 members were present. There was a board quorum. All members led the Pledge to start the meeting. There was one guest, Susanna Phillips, who recently joined and has a buckskin mustang.

PROGRAM

County Fair Gate Duties, Christy Schram-Duggan: Christy spoke about the gate duties at the county fair, our only fundraiser. BRBCH is the "first face" at the fair. Gate folks do not have to deal with any problem visitors. Contact the day manager, then Christy, then Ed, then Melissa to handle issues. Tickets are the same price as last year, and can be purchased online. Ticket takers will be using a QR scanner on tickets this year and stamping visitors. The ticket sellers will be printing QR tickets for folks paying at the gate. The Square will NOT be used this year. Ticket sale reconciliation forms are updated for this year. Volunteers work 4 hours, get in that same day free, and get a ticket for another day. Friends and family are welcome to volunteer. Volunteers have to fill out a background check – this is primarily for liability. The form can be found online and dropped off at the fairgrounds office. Every gate has shade and seats for the ticket takers. Thursday will be sensory day again with no lights or sound in the carnival – entry is at the south and west gates.

BUSINESS

Minutes: The June minutes were provided at the July meeting, and Karen read them to the group. There were no corrections. **Mary Odell motioned and Christy Schram-Duggan seconded to accept the June general meeting minutes as read. Motion carried.**

Treasurer's Report: Elaine presented the July treasurer's report. Each CD has \$10+ K. There were no questions. **Travise Grinnell motioned and Joan Scheffer seconded to accept the July treasurer's report. Motion carried.**

Correspondence/Announcements: Lionel is helping pack out the Trapper Creek crew. Bonnie talked about her BLM donkey and taking him to Mule Days this year. He won the grand championship in donkey confirmation class this year! Dan M had a recent brand inspection and brought a brochure on livestock movement requirements from the MT Dept of Livestock. Send Tim Meyers photos for the chapter's history.

COMMITTEE REPORTS

State Directors: Ed D provided a recap of the BCHMT Gold Creek Rendezvous held June 27-29. There were 6 BRBCH members. They rode all over Beck Ranch. About 100 folks attended. The Fosters cooked a steak dinner again! BCHMT is working to gather \$10K to support the BCH kiosk at the new museum in Missoula - \$5K has been raised so far. Contact Ed or Brad to support.

Training: A crosscut class may need to be arranged – contact Bonnie if needed. Check your training on the chapter website

and let Bonnie M know of any changes.

Membership: There are currently 67 memberships and 105 members.

Outreach: Karen noted that she has been successful getting projects printed in the Bitterroot Star. Tod McKay (FS) is sharing Facebook project posts.

Projects: Chris C talked about the Boulder Creek project on July 18-20. He has ridden the trail and there is primarily brushing that needs to be done, hopefully to the falls. The Bear Creek trail has been done and the Lost Horse cabin has been opened, so we won't be handling it. Mary O talked about the need for fence repair at the McGruder Station, and whether a grant could be written for it. She will email the Grant and Project committees about this. Dan M spoke about the East Fork project. Seven hardy folks rolled up about ¼ mile of 4-strand barb wire and removed ~12 T-posts over 2 days. It was a very successful project with no injuries, and there is no more barb wire at East Fork!

Program: No report. If anyone has ideas for a speaker, contact Pam Ristad.

Public Lands: No report.

Sunshine: If a member needs a get well, congratulations, or condolence card, let Jenna Wright know.

OLD BUSINESS

No report.

NEW BUSINESS

No report.

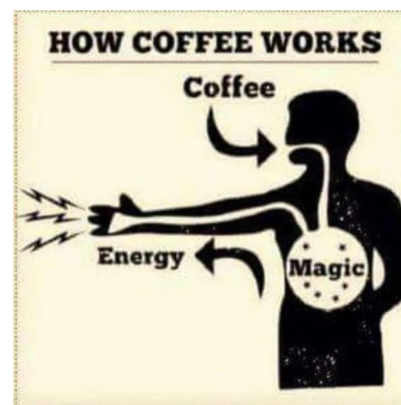
OTHER BUSINESS

Travise noted a message on the BRBCH Facebook page about a bridle left at the Rock Creek Horse Camp at Lake Como. If found, see the FB post for contact info. Dan Maiyo and Gene Merrell are going on a 100-mile segment of the Chief Joseph Trail Ride July 20-26 from Jackson, MT to Leadore, ID.

Next Meeting: August 21 at the Rock Creek Horse Camp, Lake Como; potluck at 6:30, meeting at 7:00 pm. Bring your own beverages and chairs.

Travise Grinnell motioned and Ed Duggan seconded to adjourn the meeting. Motion carried. The meeting adjourned at 8:15 pm.

Kathy Stroppel-Holl, BRBCH Co-Secretary



BITTER ROOT BACK COUNTRY HORSEMEN
DRAFT BOARD MEETING MINUTES, AUGUST 7th 2025

The August 2025 Board meeting of the Bitter Root Back Country Horsemen (BRBCH) was called to order by Brad Pollman at 7:05 pm at the Daly-Leach Community Room. Present were President Brad Pollman, Vice-President Dennis Hardman, and Co-Secretary Karen Philips; Directors Chris Carrera, Diane Duffie, Mary Odell, Joan Scheffer, Julie Schram, Barb Walker, and Mark Wright. Absent were Co-Secretary Kathy Stoppel-Holl, Treasurer Elaine Driskell, Directors Christy Schram-Duggan and Lionel Lavalley, State Director Ed Duggan and Alt. State Director Chuck Miller. There was a Board quorum. Committee chairs and members present: Bonnie Morgan, Carol Johns and Dan Maiyo. All led the Pledge.

BUSINESS

Minutes: The June 2025 Board minutes were published in the Nag News. **Mary Odell moved and Dennis Hardman seconded to accept the June minutes as published. Motion carried.** The July board meeting was cancelled.

Treasurer's Report: Elaine Driskell was absent but reported to Brad that account balances for CDs, checking, and savings were all in order. Her official report will be presented at the September board meeting.

CORRESPONDENCE AND ANNOUNCEMENTS

Corvallis School District Cafeteria: Brad and Dennis will fill out the application form and look at the new cafeteria facility, a possible option for future general meetings.

Hay needed for Chuck's daughter Katie: Karen reported Katie's need to find hay for the winter, to feed Chuck's senior horse and mule. Katie's phone number was provided so members can contact her with hay possibilities

COMMITTEE REPORTS

Membership: One new family membership was presented for Susanna and Joshua Phillips; Susanna attended the July general meeting. **Diane Duffie moved and Joan Scheffer seconded that we approve this family membership. Motion carried.** There are now 107 members and 68 memberships.

State Directors: Brad said state directors will have a September meeting and the topic of contributions to the BCH kiosk will be discussed. Mack Long will send out a letter regarding the Region 1 closure. All 9 regional offices in the country will be closed and 3 "hubs" will be located in Alaska, Colorado and Washington, DC. This may impact our cost-share and volunteer service agreements after three years. According to Dan Pliley, West Fork District Ranger, there will be three levels of decision making: district, hub and D.C.

Training: Bonnie has no information on places or dates for saw training. Bear Creek Trailhead and Lost Horse cabin are possibilities. She will bring this up at the August 21 general meeting.

Projects: Mary mentioned that Calf Creek has a lot of head

high brush and big trees down. This spring Brad and Dennis met with FWP Bob White re: the FWP weed project this year. Brad will ask Ed Duggan to contact Bob White re: a fall trail project at Calf Creek. **Ed's report:** Chris and Dorothy worked very hard to make the Boulder Creek project comfortable, and the food was great. Chris said he was very pleased with the turnout.

Fair: Christy's report stated that there are quite a few slots to fill, and Bonnie Duggan could use help with scheduling. Christy asked members to share our chapter's FB post and reach out to family, friends and neighbors to sign up for gates. She is still working on the new payment system, debugging and testing it, assisted by son John and his friend Jocelyn. She will provide the latest information at the August 21 general meeting.

Public Lands/Issues: Carol reported on the Roadless Rule: Brooke Rollins, USDA chief, plans to rescind the FS administrative rule that prevents further road building, and that decision will open up areas for resource extraction on Forest Service lands. BCHA and BCHMT are not taking a stand on this issue unless there are places that could affect trails or trail access. Sheep Creek mining activity involves surface exploration at this time. Ravalli County Natural Resources management plan is out now.

Long-Term Planning: We need to form a committee to focus on the future of equine use on the BNF. Brad asked for committee volunteers at the June 19 meeting. Julie Schram and Brandi Ashford have volunteered to serve. Matt Anderson has asked for our input. The bike and ATV groups have already submitted their input.

OLD BUSINESS

Summer Meeting Schedule for August 21 at Rock Creek Horse Camp: Diane will handle this so we have a place for the meeting. She will reserve the Three Sisters Group Camp for the August 2026 meeting at the one-year date.

NEW BUSINESS

Nominating Committee: Bonnie, Julie, and Diane have agreed to run this committee.

OTHER BUSINESS

Chief Joseph Trail Ride: Dan reported that he and Gene participated on this 100-mile trek from Jackson Hot Springs, near Twin Lakes, to Leadore Ranch in Leadore, Idaho. It retraces a section of the route that the Nez Perce Indians took while trying to escape to Canada.

Chuck Wagon: Dan asked someone to step up to be responsible for hauling the trailer to the summer meetings.

Newsletter: Dan asked for a volunteer to take over the newsletter. He has been editor since 2021 and is ready to hand over the position to someone else. He will work with that person to help in the transition.

Joan Scheffer moved and Barb Walker seconded to adjourn. Motion carried. The meeting ended at 8:16 pm.

Karen Philips, Co-Secretary BRBCH

Editor's Note:

Riding the Chief Joseph Trail

On Monday, July 21st, I joined Gene Merrell and 85 other Appaloosa (and other breeds) horseback riders to ride a 100 mile segment of the 1,300 mile route used by the Nez Perce people in their flight to evade 2,000 U.S. soldiers, beginning June 1877 and ending with their forced submission at Bear Paw in October 1877. Every year since 1965 the Chief Joseph Trail Riders have memorialized that event by riding a 100 mile portion of that route. Each segment follows progressively for 13 years. We rode for 5 days along the Continental Divide, starting at the Chief Joseph Ranch just west of Jackson (hot springs) Montana to the Leadore Angus Ranch 8 miles north of Leadore, Idaho.

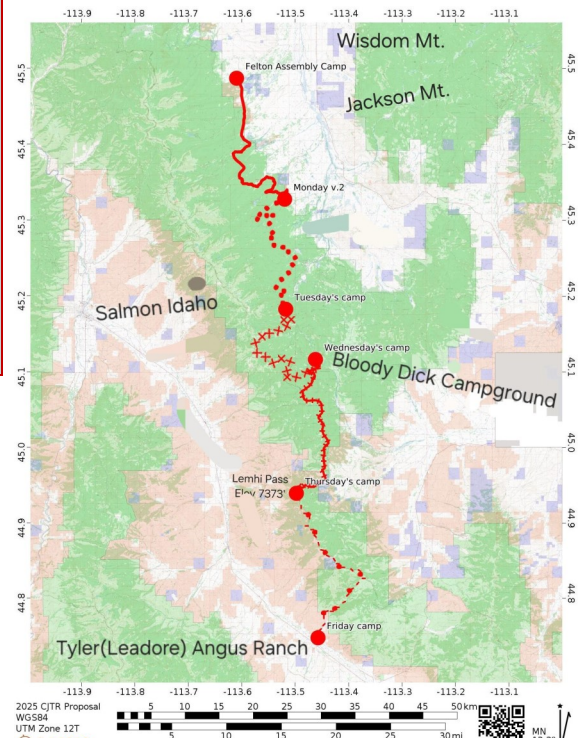
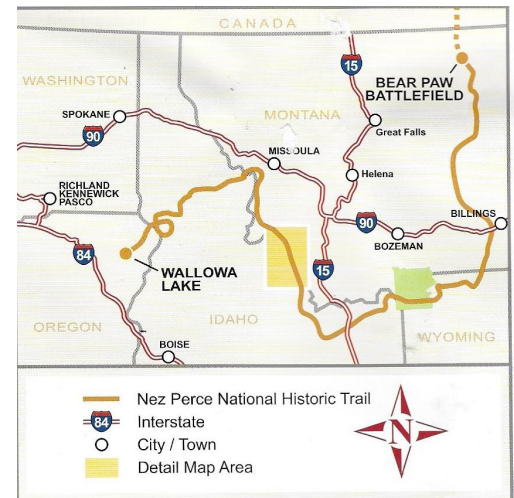
"Spot" my leopard Appaloosa, crossed logs, bogs, water crossings, negotiated extremely steep climbs and descents, a 50 mph wind and hail storm, black bears and never faltered. He took care of his daddy! I'm proud to have been part of this historic event!

Official Miles

Mon. July 21st: 22 miles
Tues. July 22nd: 17 miles
Wed. 23rd: 16 miles
Thur. July 24th: 19 miles
Fri. July 25th: 27 miles

Gene Merrell, a veteran of 28 rides, was one of several trail scouts that monitored the group for safety.

I was exhausted after the first day. With his encouragement, I took Tuesday off and came back recovered and strong Wednesday to complete the ride!



Gene, Dan and spotted butts on 9,300 ft. elevation scenic overlook.



Horse Sense - Sponsored By:



We carry all your equine vaccination and deworming needs, plus a large supply of animal health products. Visit us in Corvallis or Deer Lodge, on Facebook, or www.cowpokeranchsupply.com
406-961- 4917 Monday-Friday 8 – 5:30 Saturday–9 – 4:00

Hoof Function in Movement Part 1 of 2

by Sue Stuska Ed.D Nov. 2005 Eclectic Horseman magazine

The horse's hoof is an amazing structure. Understanding how it works will help us make good shoeing and trimming decisions in cooperation with the farrier.

The barefoot hoof lands on the full near-circular extent of the wall. The wall's toe is relatively thick (from inside to outside), so it doesn't flex much, but the wall at the quarters is thinner and allows the hoof to flatten out as it contacts the ground. The heels of the wall are also relatively thin and flexible, and these widen as the hoof lands. The wall gets its flexibility from its tubular fibrous nature, which, like many hairs stuck together, grows downward from the top (coronet band) and is connected to the underlying tissues (the sensitive laminae). The wall has a lot in common, anatomically, with our toenails.

Part of the shock of landing is taken by the wall and its expansion. Additional shock is absorbed by the frog. The frog is made of the softest, most resilient, tissue on the bottom of the hoof. The frog flattens out as it contacts the ground, pressing outward on the bars and thus on the wall.

The concave sole flattens out somewhat as the horse steps down. This is one reason why it's hard to keep a flat-soled horse sound when he's ridden on rocky ground: the sole should contact the ground when the soft earth is pressed up into the hoof, but the sole itself should not be the primary contact point with unyielding ground.

Traction is facilitated by the cupped sole and by the somewhat sticky frog. Inner shock absorbers include the central-rear wedge-shaped elastic plantar cushion and the lateral cartilages (which harden in the ailment called side bone). Both have cushioning functions and react to frog pressure by expanding sideways.

The circulatory system benefits from all these structures doing their job. Most of the blood (and lymph fluid) present in the sensitive structures and that in the vessel plexus under the coffin bone and plantar cushion is pressed out and away from the bottom of the hoof. Some remains and acts as a hydraulic cushion. The blood-pumping action of the hooves has been likened to accessory hearts; anyone who's had a horse "stock up" from standing in a stall knows the value of his moving around. One-way valves in the vessels keep the blood from reacting to gravity; the blood continues to flow up the leg.

As the horse's body travels forward, the hoof changes from its shock-absorbing function to that of a lever. The (flexor) tendons and muscles tighten. The hoof rocks forward onto the toe, the toe digs into the ground, the hooves push back against the

ground as the horse propels himself forward. The critical point between shock absorption and lever function is the breakover. Ideally, the toe will be able to dig into the ground during breakover for maximum leverage and traction.

As the hoof takes off into flight, the structures that expanded during weight bearing now contract. Taking the pressure off the hoof allows blood to flow back into the hoof, starting the next pumping cycle.

Hoof Growth. The hoof, like our toenails, is constantly growing. Growth slows during dry times and cold months, but generally the hoof grows half an inch every six weeks. The toe tends to grow faster than the heels (probably as an adaptation to the toe wearing off during movement). You may be able to see roughly horizontal growth rings in your horse's hooves that are slightly wider apart in the toe than the heels. (A foundered hoof, with the hoof wall—and, particularly, toe—circulation compromised, will instead have growth rings that are wider apart at the heels.) In the ideal circumstances, the horse would wear off his hoof walls at the same rate they grow. But the majority of the time this doesn't happen. So, as time goes by, the toe grows longer. The quarters, wearing more readily because they are thinner and growing more slowly to boot, often get shorter so that the horse is contacting the ground on the toes and heels. The problems with this are many; they include delayed breakover, which can stress the flexor tendons (tendons that flex the leg) and increased pressure on the toes, which may result in cracks from the ground surface up at the toe or quarters. All can make the horse lame.

Hoof Balance. Whole books have been written about hoof balance, but the basics follow. From the front, the horse should be built so that his coronet band parallels the ground—and he should be trimmed this way as well. From the side, the front of the hoof should extend the line down at the same angle to the ground (the "hoof angle") as the front of the pastern—and the trim should reinforce this. Some people are more easily able to follow the imaginary line bisecting the pastern and extending down into the hoof.

Of course, each horse (and sometimes each leg) is different, and each must be trimmed according to conformation. The trim should help the horse approximate ideal form while following his individual needs. It's a challenge to be able to see (analyze) this, and even more of a challenge to be able to trim correctly. That's why farriers go to school, apprentice, and continually learn and perfect their art.

If the hoof is not balanced according to the horse's conformation and the best approximation to ideal, this can create all sorts of problems. The horse may move poorly, perhaps striking the opposite leg; he may put excess stress on his flexor tendons; he may develop arthritis; or the hoof may develop stress cracks.

(Part 2 continued next month)

BACKCOUNTRY KITCHEN SPONSORED BY:



The Shirt Spot

1704 N 1st St Unit C
Hamilton MT 59840

The Shirt Spot is new to Montana since April 2023, but has over 20 years' experience in the industry! Services offered include printing, embroidery, sign banners, stickers and business cards. Quality clothing including tee's, tank tops, and ladies crop tops are offered at a reasonable price. Also offered is a huge variety of headwear ready for embroidery!

AMARILLO RIBS 'N BLACK NIGHT SAUCE

Ingredients:

- 3 or 4 or 5 lbs baby back or beef ribs
- 1 cup strong black coffee
- 1 ½ cups Worcestershire sauce
- 1 cup catsup
- ½ cup butter
- ½ cup lemon juice
- 2 tablespoons sugar
- 1 tablespoon salt
- 2 teaspoons cayenne

Mix ingredients, cook on low heat and let simmer for 30 minutes, cool and then pack it for the trail. To cook ribs, season beef or pork ribs with a generous slap of sauce, wrap in foil and place on grill over slow fire for 30 minutes. Open foil, drain off fat, give ribs another slap of sauce, rewrap, turn and cook 30 minutes more. Unwrap and place directly over fire until brown.

Exclusively at the Shirt Spot! Embroidered Bitter Root Back Country Horsemen logo on in-stock vests and jackets or a vest/jacket of your own choice. Personnel Wyoming Traders vest shown. Custom thread color available. Inquire for pricing. Caps offered in a variety of styles and colors! \$25/cap or \$20/each/10 caps. **Tell the Shirt Spot that you saw this notice in this newsletter! Show your support for our BCH Chapter!**



2025 Committees	2025 Chairs & Members
Audit	(Changes Annually) 2025: Barb Walker, Joe Kirkland, Elaine Driskell
Audio-Visual Equipment	Dennis Hardman, Travise Grinnell
Budget	(Changes Annually) 2025: Gene Merrell, Earl Phillips
Election & Nominations	(Changes Annually)
Equipment & Inventory	Ed Duggan, Chuck Miller
Fair	Christy Schram-Duggan
Grants	Brandi Ashford
Historian	Tim Meyer
Issues	Carol Johns, Kathy Stroppel-Holl
Long-Term Planning	(Volunteer Needed)
Membership	Barb Walker
Advertising	Virginia DeLeo
Newsletter	Dan Maiyo
Outreach	Travise Grinnell
Parliamentarian	Joan Scheffer
Pleasure Rides	Pam Ristad, Candice Erickson
Programs	Pam Ristad
Projects	Ed Duggan
Social	(Volunteer Needed)
Sunshine	Jenna Wright
Training	Bonnie Morgan
Website	Nancy Pollman

Bitter Root Back Country Horsemen Officers and Board

Chapter officers				
Position	Name	Term	Contact	
President	Brad Pollman	2025	406-546-6491	
Vice President	Dennis Hardman	2025	307-699-1679	
Secretary	Kathy Stroppol-Holl/Karen Phillips	2025	Kathy 720-244-2943, Karen 406-369-0725	
Treasurer	Elaine Driskell	2025	916-698-8544	
Board Members	Term	State Directors	Term	BCHMT State Chairman
Diane Duffie	2024-25	Ed Duggan	2025-26	Mack Long
Mark Wright	2024-25	Brad Pollman	2024-25	
Lionel Lavallee	2024-25	Alt. State Director		BCHMT Vice State Chairman
Joan Scheffer	2024-25	Chuck Miller	2025	Sandy Himmel
Chris Carrera	2025-26	BCHMT National Directors		Alt. National Director
Mary Odell	2025-26	Brad Pollman		John Chepulis
Julie Schram	2025-26	Connie Long		
Christy Schram –Duggan	2025-26			
Barb Walker	2025-26			
		BRBCH Past President		
		Jan Bullock		

**COW POKE
RANCH SUPPLY**

For All Your Farm & Ranch Needs!

1308 Eastside Hwy.
Corvallis, MT 59828
www.cowpokesupply.com

Ph: 406-961-4917
Fx: 406-961-4917
Email: cowpoke@montana.com

Turnkey Construction Inc
Stevensville, Montana
25+ Years Experience

**RADIANT IN-FLOOR
HEAT SYSTEMS**

Brad Pollman 406-546-6492
TurnkeyConstructionInc.com

• SCREEN PRINTING & EMBROIDERY •

*The Shirt Spot
Montana*

☎ 406-389-4096
📍 1704 N. 1ST STREET, STE C
HAMILTON, MT 59840

Motorcycle Garage
service and parts
406-360-6520

Hale Steel and Saw

Tree Service
Forest Fire Mitigation
Firewood
Chainsaw Repair/Maintenance
Affordable Prices

Grass Fed Beef

Locally Grown
Fully processed or by the ¼, ½ or whole animal
Cattle rotated to fresh grass daily
No growth additives or chemicals including fertilizers

Preorder yours for October delivery or stop by

LIFELINE FARM

2533 Pleasant View Drive
Victor, MT 59875
email: lifelinefarm@msn.com
www.lifelinefarm.com

**Lifeline Creamery &
Farm Store**
406-642-9717

FRESH • LOCAL • ORGANIC

Organic Milk, Cheese, Butter, Beef, & Pork

CRAZY HORSE CONSIGNMENT
Tack and Western Boutique
6555 Hwy 12 W. Lolo, Montana
406-273-4226 SHOP
Bonnie
406-370-4223
Johanna
406-370-0459
www.crazyhorseconsignment.com
P.O. 1642 Lolo, MT 59847

FOR SALE

- Protective chaps and helmet. Used once.
- Chaps measure Length 32", Waist 30-42".
- Color is navy blue.
- Sells at Murdochs for \$159.00.
- \$100.00 for both.
- Contact Susan Slemph 406-381-5910.



Lemhi Pass

Riding down to Leadore Angus Ranch from Continental Divide trail.



Spot



Bitter Root Back Country Horsemen



NEXT BRBCH MEETING

Thursday, August 21st, 2025

Lake Como Rock Creek Horse Camp

Dinner at 6:30pm Meeting at 7:00pm

Visit our Website:

bchmt.org/bitterroot

Bitter Root Back Country Horsemen
P.O. Box 1083
Hamilton, MT 59840