

# MISSION VALLEY BACKCOUNTRY HORSEMAN



Winter edition  
January 2018  
(Marie Hall, Carol McCrum,  
Dennese Schauss, Laura  
Nelson)



## LETTER FROM THE PRESIDENT

Hey There Everyone! Do hope you all had a wonderful Holiday season. It did come and go a bit too fast. With fall comes the time to prepare for winter, finish getting in the wood and of course guys and gals—hunting. Do hope everyone had a good season.

We started into winter with the fall highway cleanup that had a good turnout, lost our secretary when she moved back to Vermont for a job, cancelled the November Poker ride due to early snow, elections held in December and last but not least a fantastic Christmas Party!

We have various members of the club working on projects such as timber bunks for club packing projects, new improved saw boxes for trail cleanings and nailing down our Challenge Cost Share Agreement with the Forest Service.

What do we have going on for this year? Yes we have the same obligations/responsibilities that we always have—Highway Cleanup, three trails to Clean, River Honoring, Rodeo Parking, and possibly a another job with the Forest Service involving repairing a bridge up at Heart Lake or Trail head work at the St Regis end of the River Trail. We also have the Annual Steak Ride—a favorite for everyone and an event that does draw a lot of members that we generally don't see that often.

I would also like to see us get back into more of our monthly club rides. We as a group need to get together and ride for fun! We should look at a weekend camp trip—something that we do not need to rush to and from.

The plan is another good year—following our mission statement and enjoying the company of our friends. That includes both the two legged and the four legged critters.

God Bless and be safe! (Laura Nelson)



Laura Nelson (President) on Jazzy Lady up in Plains. Life is good for me, don't know if Jazz would say that!



## 2018 OFFICER AND BOARD MEMBERS

In order left to right: Connie Long, Carl Schauss, Dennese Schauss, Bill Dupuis (*way in the back*), Larry Ruffatto, Carol McCrum, Louis Polinsky, Laura Nelson, Marie Hall, Scott Hopper, Sherri Hopper, Scott Kiser, and Mark Potter.

Officers are elected for a one year term running from January to December. Both Club and State board of Directors serve a two year term, State Board running in conjunction with convention.

## **MISSION STATEMENT OF THE MISSION VALLEY BACK COUNTRY HORSEMAN**

The purpose of this organization shall be:

- To perpetuate the common sense use and enjoyment of horses in Montana's roadless backcountry and
- To assist the various government agencies in their maintenance and management of said resources and
- To educate, encourage and solicit active participation by various members of the general public in the wise and sustainable use of horse and people, commensurate with our heritage and backcountry's resources, and to work with and abide by Confederated Salish and Kootenai tribal regulations and permits.

*"Quoted from the MVBCH By-laws, adopted 01/31/05"*

## **2018 OFFICERS, BOARD & COMMITTEE CHAIRPERSONS**

<b><u>OFFICERS</u></b>			<b><u>COMMITTEE / EVENT CHAIRPERSON</u></b>	
President:	Laura Nelson	599-8809	Day Rides: Club Meetings/Laura Nelson	599-8809
Vice President:	Scott Hopper	745-0012	Education & Safety: Connie Long	644-7889
Treasurer:	Paula Weaver	253-7136	Events Schedule: Club Meetings/Laura Nelson	
Secretary:	Mark Potter	250-3965	Highway Cleanup: Carol McCrum	676-8114
State Board 2-year	Scott Kiser	260-8398	Club History: Dennese Schauss	883-5876
State Board 1-year	Connie Long	644-7889	Issues: Mac Long	644-7889
State Board Alternate	Mac Long	644-7889	Laura Nelson	599-8809
Ntl. Ed. Chair	Mac Long	644-7889	Membership: Marie Hall	676-0231
<b><u>MVBCH BOARD OF DIRECTORS</u></b>			Web-Site & Face Book: Bonnie Kiser	883-2186
2-year	Carl Schauss	883-5876	Newsletter: Laura Nelson	599-8809
2-year	Dennese Schauss	883-5876	Marie Hall	676-0231
2-year	Bill Dupuis	675-3549	Carol McCrum	676-8114
2-year	Marie Hall	676-0231	Dennese Schauss	833-5876
<u>2-year</u>	<u>Louis Polinsky</u>	<u>544-5103</u>	Nominating Committee: appointed for elections	
1-year	Carol McCrum	676-8114	General Meeting Programs: Carol McCrum	676-8114
1-year	Larry Raffatto	676-8114	Publicity: Carol McCrum	676-8114
1-year	Mac Long	644-7889	River Honoring/LNT: Scott Kiser	260-8398
1-year	Scott Kiser	260-8398	Rodeo Parking: Laura Nelson	599-8809
1-year	Sherri Hopper	745-0012	Steak Ride: Scott Kisesr	260-8398
			Scott Hopper	745-0012
			Work Projects/Trails: Laura Nelson	599-8809
			Scott Hopper	745-0012
			Carl Schauss	883-5876
<b><u>COMMITTEE / EVENT CHAIRPERSON</u></b>				
Audit Committee: Scott Kiser		260-8398		
	Mark Potter	250-3965		

# ANNOUNCEMENTS



Rylee Hauge—Luke & Marisa's baby girl

## **MEET RYLEE HAUGE—LUKE AND MARISA'S BABY GIRL!**

Luke Hauge and Marisa Iceman were married earlier this year. Little Rylee has joined the fold recently. Congratulations Luke and Marisa. She looks like an Angel!

Luke and Marisa have been members of the club for a couple of years now. Both have gone through Defensive Horsemanship and CPR/1st Aide training and various packing clinics the club has held. They will continue to be members of the club including little Rylee all the way!

***ANNUAL CLUB BOWLING  
SATURDAY—JANUARY 27TH  
LUCKY STRIKES LANES IN RONAN  
STARTS AT 11:00AM  
ORDER OFF THE MENU***



Carl Schauss waiting for the Strike!

## **OCTOBER 19, 2017 FALL HIGHWAY CLEAN-UP**

**5:30PM HWY #35 MILE MARKER 12**

Two times a year MVBCH members meet near mile marker 12 on Highway 35 (Blue Bay) and pick up litter for 2 miles. This program was started in 1994 and continues on.

On October 19, 2017 15 members met at 5:30pm to begin our project which takes approximately 2 hours. A total of 5—large, heavy duty lawn bags were filled. The weather for this project was fantastic and we had a spectacular sunset on Flathead Lake to gaze at.

After “breaking camp” we all headed to Pizza Hut for dinner and great conversation!

A big **THANK YOU** to: Larry Ruffatto, Jim & Dorie Murphy, Sherri Hopper, Bill Dupuis, Pete & Candi Weimer, Paula Weaver, Carl & Dennese Schauss, Hugh Henderson, Marie Hall, Bonnie Kiser, Ryan Severson, and Mark Potter. It sure is nice to get a great turnout for this project.

This program is a wonderful way to beautify our state and at the same time give recognition to our organization for participating. *(submitted by Carol McCrum)*

## THIS IS JUST A GENTLE REMINDER OF SOME OF OUR LOSSES THIS YEAR

### ***BILL WEAVER***

Bill Weaver passed away on May 25, 2017 at his home on 4216 Peace Rode, Polson MT 59860. Bill was a fellow horse lover, photographer and a member of MVBCH. Bill was a very soft-spoken man and will be remembered by his partner Paula Weaver and all of his friends and MVBCH. Happy Trails Bill!!!!



### ***DORRIE BRUSO***

Dorrie was elected as secretary for 2017. She was very good at this. Recently, the first part of November, Dorrie moved back to Vermont for job opportunities. Dorrie was a big help in the Great Burns trash Haul and very involved in the club. Not only will we miss her involvement in the club but also that bright smile!



*Dorrie Bruse – Front row 2nd to the left*

### ***ANNUAL CHRISTMAS PARTY***

The annual Christmas party for all members and guest of Mission Valley Back Country Horseman was held at Charley and Susan Hahn's barn on Saturday December 9-2017. This year, there were approximately 40 members and guests in attendance and we were treated to a scrumptious meal of delicious fried chicken, numerous side dishes, and some of the best deserts made in Montana



*Charley Hahn – What could this be????*

As always, the highlight of the evening was the Chinese Gift Exchange. If you are not aware of what such an exchange consist of, just be assured it is a "cutthroat" process. Many presents were opened, stolen by other members, hidden under chairs to hide from thieves, and in some cases, stolen again. Everyone had ample time to just sit back and visit with friends and just enjoy each other's company. (Charley & Susan Hahn)



*Sherri Hopper scoping things out!!!!!!*

## ***ISSUES / EDUCATION***

Being a member of the issues committee you will probably see more about what is going on as part of BCH issues, Public lands, etc. Hopefully this will help keep you informed of what we, as an organization, are facing concerning our wilderness, public lands, and wilderness study areas. The following is what Mack & Connie Long have put together. This is not only an issues article but also an education on the terminology associated with some of the issues.

There has been a lot of attention recently about Public Lands and where America is headed with the management of those lands. Further, anyone who recreates on Americas public lands is often exposed to unfamiliar terms and may not understand the differences. Following is a brief description to give you a working understanding of the differences and what that means to you.

First, what are **“Public Lands”**? These are the lands that are owned “equally” by all Americans. There are 618 million acres of public land across the U.S., with a significant portion in Alaska and the western U.S. The total U.S. land base is 2.27 billion acres in size. These federal public lands are managed in trust for us, (citizens of the U.S.) by the Forest Service, Bureau of Land Management, Park Service and the Wildlife Refuge System for current and future generations.



The Mission Mountains (phot by Uschi Carpenter)

**“Front country”** is not a commonly used term, but is generally any public lands that are relatively accessible by means such as motor vehicles, boats, bicycles, hiking, horseback and aircraft and are usually within a short distance of roads. Generally, these lands provide a multitude of recreational activities. Camping may be in developed or dispersed/undeveloped areas. Logging, grazing and mining are often permitted on these lands as well. These are often highly used areas where it is common to see other people and activities.

**“Backcountry”** is generally the area beyond what is Front country. Pretty vague, but accurate. There is no specific line or map designation where this starts or ends. Access is more challenging and is usually by a trail or cross-country travel and at a further distance from roads and trailheads. Access may be allowed by the same list as above, but with greater responsibility on the user as trails receive less maintenance. In addition, the safety and welfare of each recreationist to care for themselves is increased. Camping is usually in dispersed sites. You would expect to see fewer people and activities than in the Front country.

**“Roadless Areas”** had their beginnings when Primitive Areas were established in the 1920’s. The idea was to preserve some lands in a roadless condition at a time when automobiles and road building was rapidly expanding. As time progressed, Roadless Areas have been challenged legally and politically as to which lands should remain or be opened. Currently, there is about 58 million acres of unroaded forests. There is about 380,000 miles of roads on Forest Service lands. In comparison, the Interstate Highway system has about 47,000 miles of road.

Unlike Front country and Backcountry, **“Wilderness”** is defined and receives that highest level of land protection. While some may get a “wilderness experience” in the Front country or Backcountry or a Park, true Wilderness is a specific geographic area and can only be established or “Designated” by an act of Congress. The Wilderness Act of 1964 put into law what is required to be a **“Designated Wilderness”**. It states how it will be managed and what modes of ac

cess or travel are acceptable. The Act requires that it be managed to protect its natural condition, where it is untrammeled by man. It is to maintain its primeval character, shaped by the forces of nature with man's work substantially unnoticeable. The purposes will be to provide solitude, and escape from mechanized use and maintain historic uses.

Three more terms that you may hear. **"Recommended Wilderness"** is generally lands identified on Forest Plans or agency plans that recommend specific areas for Wilderness Designation by Congress. **"Proposed Wilderness"** is generally lands that have been submitted to Congress for Wilderness consideration, a step closer than recommended. However, these two terms can mean the same thing depending on the agency. Finally, **"Wilderness Study Areas"** or WSA's are areas that are inventoried and undergoing the Wilderness review process. They are lands that should be managed to preserve the character or special attributes that made them a WSA.

**Parks** generally have defined geographic areas which are indicated on maps. The recreational uses within a Park are often highly regulated due to a significant amount of visitor use. There are 58 National Parks, and most are associated with a specific national treasure. Interestingly, some iconic National Parks like Yellowstone, Grand Teton and Glacier and others are NOT designated Wilderness. They are "recommended wilderness" but to date, Congress has not given them the additional level of protection.

Parks can be managed by a city, state, private or federal entity. The simplest definition comes from Wikipedia: *A "Park" is an area of natural, semi-natural or planted space set aside for human enjoyment and recreation or for the protection of wildlife or natural habitats. It may consist of grassy areas, rocks, soil and trees, but may also contain buildings and other artifacts such as monuments, fountains or playground structures.*

The vast majority of our public lands are managed under the **multi-use designation** that includes both the Front country and Backcountry. This allows for a multitude of activities to be offered on the majority of our Public Lands. Only about 3% of the lower 48 states land base is designated Wilderness. *(Submitted by: Mack Long Mission Valley BCH, BCH Montana, Education Chairman BCH of America)*

January 1-2018, as president of MVBCH, I signed on to the following letter Opposing "Wheels Over Wilderness". Not only has BCH-MT signed on but individual clubs are signing on as well. This is an issue that has been discussed actively at both the general and board meetings and as an organization, we do oppose this.

Dear Member of Congress:

On behalf of our millions of members and supporters, we urge you to OPPOSE H.R. 1349, the "Wheels Over Wilderness" bill, when it is considered in House Committee on Natural Resources.

Since 1964, the Wilderness Act has prohibited mountain bikes from America's National Wilderness Preservation System, and the Act already permits the use of wheelchairs in wilderness. H.R. 1349 would fundamentally change this bedrock environmental law by opening America's 110 million acres of wilderness areas to mountain bikes. This change would undermine the Wilderness Act, threaten wilderness areas nationwide, and significantly affect the management and public enjoyment of America's wilderness to the detriment of the American people.

We support mountain biking on America's public lands. Across the country, wilderness advocates and mountain bicyclists have successfully worked together to develop proposals that preserve access to important mountain bike trails and protect wilderness. We need more mountain bicycling opportunities and we need more wilderness and, working together, we can achieve both. Unfortunately, these collaborative efforts are threatened by H.R. 1349.

H.R. 1349 would undermine protection of America's National Wilderness Preservation System, rewrite a bedrock environmental law, jeopardize America's 110 million acres of wilderness and imperil collaborative work across the country. For these reasons, we urge the committee to reject this legislation.

(Laura Nelson—MVBCH President, Jan 1-2018)

# **2018 BCH-MT CONVENTION HOSTED BY JUDITH BASIN BCH APRIL 6-8 IN LEWISTOWN**



*Welcome Aboard!*

Get ready for a wild ride during the **2018 Back Country Horsemen of Montana State Convention to be held April 6-8 in Lewistown**. Register early for the marquee event, a round trip on the world famous dinner train, the **Charlie Russell Chew Choo**. Space on the dinner train is limited to the first 250 attendees; so do not wait to register for the 2018 State Convention.

All official 2018 State Convention activities will take place at the **Trade Center at the Fergus County Fairgrounds** located 1000 US HWY 191 in Lewistown. This leaves each delegate free to select the accommodations of their choice. A list of hotels and a map is provided for your convenience.

As is tradition, Judith Basin BCH asks each chapter to bring with them a **live auction item of \$100** value or more to support the State organization. In addition, we ask each member of Montana's BCH to aid in the sale of raffle tickets prior to the convention. **Raffle prizes** are shown on each ticket and can be viewed online [www.bchmt.org/judith](http://www.bchmt.org/judith).

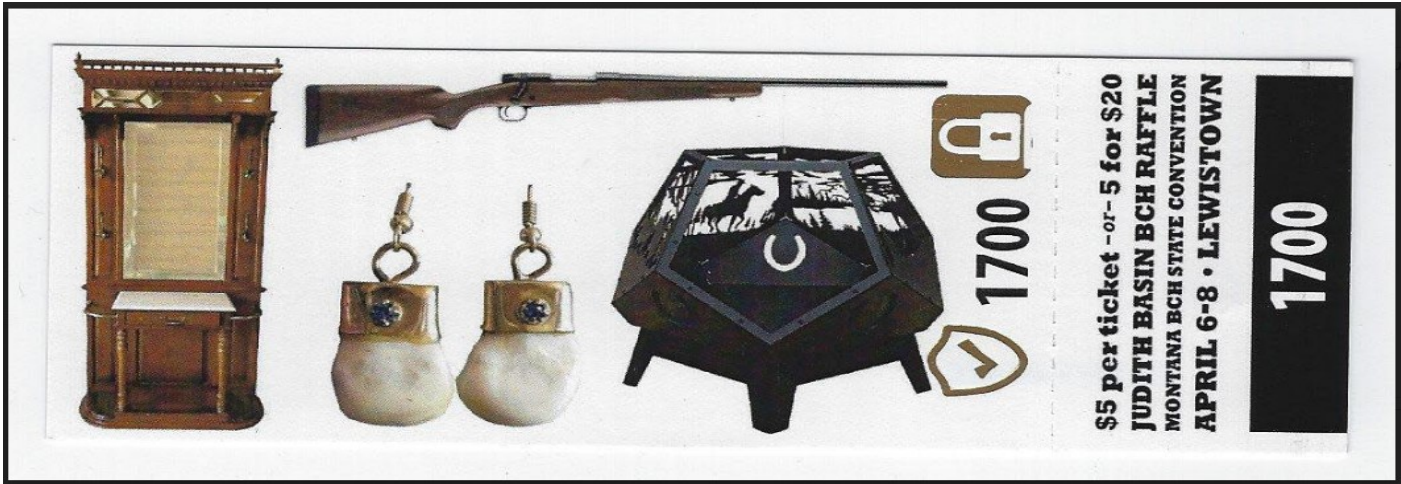
Don't forget to send **20 photos and chapter logo by February 15, 2018** for the convention slide show. Please send your photos by using the link on the convention website and placing the photos in your chapter's folder, see instructions attached.

In addition to the State Convention agenda, we've included a committee contact list and rules for the **Photo Contest**. All of these materials can also be found, and will be updated as needed, on the State Convention website, [www.bchmt.org/judith](http://www.bchmt.org/judith). We look forward to hosting our fellow Back Country Horsemen.

*Safe Travels - Judith Basin BCH*

**2018 BCH-MT CONVENTION HOSTED BY JUDITH BASIN BCH  
APRIL 6-8 IN LEWISTOWN.**

The following pictures are a depiction of the 2018 Convention Raffle Items.  
Contact Scott Kiser for Tickets at 260-8398



***AS PART OF THE YEAR END REVIEW I SENT AN E-MAIL BLAST REQUESTING A MEMORABLE MOMENT FOR THIS YEAR. THE FOLLOWING IS WHAT I RECEIVED***

I am sorry that I haven't been able to be there much this last couple of years, but I just have to say, the members that I have met since I joined and grew to know a little (they know who they are) mean a lot to me. Everyone seems to have a team spirit and everyone holding positions really care about doing a good job. I just have to say that most all of the meetings I have attended have been memorable. Even though I don't have a horse, just getting to know the members that I have and listening to the wonderful speakers you brought in, it's all memorable for me. (Ellen Achenbaugh: This makes it all worth while. Thankyou Ellen!)

---

Last Spring, on the return half of the easiest River Trail cleanup ever, we were on just about the narrowest trail on the steepest mountainside, when a hen turkey and her brood were hogging the trail. Since they didn't want to leave the trail, our intrepid leader (and president) Laura decided she would shoo them off the trail. Jim was leading with the equipment on his pack horse, followed by Dorie, Laura, Louis and myself. So Laura dismounted, left her horse standing as there was no place for it to wander off and carefully made her way around Dorie and Jim towards the turkeys to clear the trail.

Well, the hen didn't appreciate Laura approaching her chicks, took a good look at Laura and figured it was a fair fight and charged. Laura prudently retreated, but her horse noticed her retreat and, being a herd animal, decided that if the boss was retreating figured that was the prudent course of action and somehow, on that 2 foot wide trail, made a u-turn and began to leave the area. Almost immediately Louis's horse and then mine made the same choice and there we were, before we could say "easy" or "sh\_\_", heading back up the trail.

Being the horsemen that we are, Louis and I managed to control our horses quickly. The next step was another u-turn. I didn't get to see everything because we were facing the other way, but Laura and Louis got turned around and it was my turn. OK, easy, did it once, so he should be able to do it again. Wrong! I tried with his head uphill and suddenly his back end got a lot shorter. Second adrenaline rush! Before I could decide whether I should you know what, go blind or jump and before Louis could yell "Jump!", my wonderful little mustang somehow climbed back onto the trail. (Best horse ever!)

During all the ruckus, the hen turkey figured she had won. She took her brood and left allowing us to continue homeward, which we did with no further interruptions.

**Don Clauson**—I totally forgot about that! Looking back it brings a smile to the face. Thanks Don!!!



## 2017 -2018 MVBCH Activities

### General Meetings - 1st Tuesday & Board Meetings - 3rd Tuesday

All meetings begin at 7:30 pm and are held at the VFW on Round Butte Rd. in Ronan, MT

Dates and Times Subject to Change.

Please Contact Persons Assigned When Making Plans!!!

Date	Day	Event	Description of event and Location
12/31/2017	Sunday	Newsletter	Deadline for Article submission to Laura Nelson
<i>HAPPY NEW YEAR EVERYONE!!!!</i>			
1/2/2018	Tuesday	General Meeting	VFW Hall Ronan 7:30pm
1/10/2018	Wednesday	State Newsletter	Deadline for Article submission to Deb Schatz
1/15/2018	Monday	Newsletter	NewsLetter to be mailed out
1/16/2018	Tuesday	Board of Director Meeting	VFW Hall Ronan 7:30pm
1/27/2018	Saturday	Club Bowling	Lucky Strikes - Ronan 11:00am (order off Menu)
2/6/2018	Tuesday	General Meeting	VFW Hall Ronan 7:30pm
2/20/2018	Tuesday	Board of Director Meeting	VFW Hall Ronan 7:30pm
3/6/2018	Tuesday	General Meeting	VFW Hall Ronan 7:30pm
3/20/2018	Tuesday	Board of Director Meeting	VFW Hall Ronan 7:30pm
4/3/2018	Tuesday	General Meeting	VFW Hall Ronan 7:30pm
4/6-8/2018	Weekend	State Convention	Lewistown - Trade Center at the Fergus County Fairgrounds
4/17/2018	Tuesday	Board of Director Meeting	VFW Hall Ronan 7:30pm
4/28/2018	Saturday	Pre-Steak Ride	Location & Time to be confirmed
5/5/2018	Saturday	Steak Ride Setup	Location & Time to be confirmed
5/6/2017	Sunday	Steak Ride	Location & Time to be confirmed

The schedule of events is always subject to change. As you can see, we have a number of events to schedule including Defensive Horseman-ship, three trail cleaning projects before the end of June, our annual series of pack clinics and the River Honoring.

I would like to have members think about Monthly rides: Spring Hay Ride—we need a location and a another team—March?

Monthly ride involves a member of the club “hosting/leading” the ride. It is usually at a place of their choosing with a ride and a sack lunch and a good time with friends. If you have something in mind, bring it up at the general meeting or contact Laura Nelson or Mark Potter.

If you are interested in other equine events/clinics such as farrier, horse therapy, trailer backing, etc... bring it up and we will see what we can do.



## Apaches Magic Dancer

Black and White Tennessee Walker  
( Homozygous Stallion)

Stud Fee \$500 LGF

2011 and 2012 Foals available for sale.

Contact Karen Tromp, Owner

H: 406-745-3766 or C: 406-370-7653

Located at 41319 St. Mary's Lake Road, St. Ignatius

Looking for a unique gift for your favorite Cowboy or Cowgirl.



Dennese Schauss is creating hand made "Old Fashioned" neck scarves in a variety of colors.

She will custom design to your specifications.

Please contact Dennese for details:

883-5876 or 212-7654



Hahn Quarter Horses, L.L.C.

Charley & Susan Hahn - Owners  
39626 Eli Gap Rd, Polson, MT 59860

406 -270-9476

[www.hahnquarterhorses.com](http://www.hahnquarterhorses.com)



Quarter and Paint Horses For Sale

Geldings and Stallions

Brood Mares and Fillies

Come Look Them Over and Make an Offer

**MEMBERSHIP APPLICATION**  
MISSION VALLEY BACK COUNTRY HORSEMEN  
P.O. BOX 604, RONAN, MT 59864



NAME(S): \_\_\_\_\_

\_\_\_\_\_

ADDRESS: \_\_\_\_\_

\_\_\_\_\_

\_\_\_\_\_

PHONE #: \_\_\_\_\_

E-MAIL ADDRESS: \_\_\_\_\_

If applying for family membership, please list children under 18:

\_\_\_\_\_ age \_\_\_\_\_

\_\_\_\_\_ age \_\_\_\_\_

\_\_\_\_\_ age \_\_\_\_\_

~~~~~ MEMBERSHIP DUES ~~~~~

\_\_\_\_\_ FAMILY \$40 /YEAR or \_\_\_\_\_ SINGLE \$25 /YEAR

*Membership is renewed on a calendar year basis expiring on December 31st.*

**PLEASE READ!**

Serious injury or even death can result from horse riding and related activities. There are risks inherent in equine activities, and these dangers, or conditions that are an integral part of equine activities include, but are limited to:

- The propensity of an equine to behave in ways that may result in injury, harm to, or death of person on or around the equine.
- The unpredictability of an equine's reaction to such things as medication, sound, sudden movement and unfamiliar objects, persons, or other animals.
- Hazards, such as surface and subsurface ground conditions.
- Collisions with other equines or other objects.
- The potential of another participant to not maintain control over the equine, or to not act within the person's ability.

Participants in any activity shall act in a safe and responsible manner at all times to avoid injury to themselves and others, and shall be aware of the risks inherent in equine activities.

THE MISSION VALLEY BACK COUNTRY HORSMEN SHALL NOT BE LIABLE FOR INJURY TO, OR THE DEATH OF A PARTICIPANT AS A RESULT OF THEIR VOLUNTARY PARTICIPATION IN ANY SPONSORED ACTIVITY.

I certify that I have read and understand the above notice.

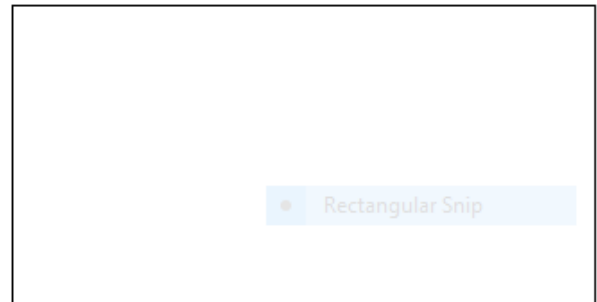
Signature \_\_\_\_\_

Date \_\_\_\_\_

Signature \_\_\_\_\_

Date \_\_\_\_\_

**Mission Valley Back Country Horsemen**  
**P.O. Box 604**  
**Ronan, MT 59864**



If your name is highlighted,  
your membership has expired.



*MVBCH established in June of 1980.*

**Interested in Horses in the Back Country??**

**Join us at the Next General Meeting.**

Find us on the WEB: <http://bchmt.org/wp/mission/>

**General Meetings: 7:30 pm \* 1st Tuesday of the Month**  
**VFW Club in Ronan**  
**Contact: Carol McCrum: 676-8114 Or Marie Hall: 676-0231**