

Mission Statement:

Our purpose is to perpetuate the common sense use of horses in America's back country, wilderness and roadless areas; to assist various government and private agencies in their maintenance of said resources; to work to ensure that public lands remain open to recreational stock use; and to educate, encourage and solicit active participation in the wise and sustaining use of the back country resources by horsemen and pack stock.



2018 SPWBCH Officers - Contact Information

President: Kathy Hundley	Ph. 363-8230
Vice President: Open	Ph.
Secretary: Jennifer Ginn	Ph. 239-0728
Treasurer: Betsy Hepburn-Day	Ph. 381-1378
Local Board: Senior- Duane Krowen & Patty Hascall	Ph. 642-3932 Ph. 370-8546
Junior- Nancy Bender & Lionel Lavallee	Ph. 360-1666 Ph. 640-1242
BCHM State Directors: Trish Foster (2 nd Director open)	Ph. 777-4383 Ph.
Alternate: Kathy Hundley	Ph. 363-8230

CONTENTS

President's Note	pg. 1
Training/DO Recipe	pg. 2
State Director's Report	pg. 3
Interest Story "Our Gift"	pg. 4
Jasper/SF Lost Horse	pg. 5
"That Poor Other Fellow"	pg. 6
BCHMT Youth Pack	pg. 7
Membership Dues 2019	pg. 8
Watchtower	insert
Blue Joint/Sawtooth	insert

NEXT MEETING

Thursday, December 13 @ 6pm

Hamilton Forest Service

Christmas Potluck

"Back Country Horsemen of MT"

"Who Are We?" video



President's Note – I hope all of you can join us for our year end December meeting and enjoy good food and good friends. There will be some business, but I hope to have some entertainment also!

Our chapter RTP Reimbursement forms have been turned in and now it's up to the state BCH to consolidate and submit to MT FWP for payment. Next year, all projects will be reimbursable for mileage, stock use, meals and use of trailers. I know we are all volunteers...but a little cash in the wallet sure does help pay for horse feed, vet bills and diesel!

Our elections will take place next week, along with an update from the State Director's meeting and BCHMT 2019 Convention information. I will have the convention packet along with raffle tickets to pass out for members to sell. This money goes directly to the host chapter, Charlie Russell BCH, of Great Falls. I have reserved two rooms in Great Falls for our delegates at this time. It is important, if more members wish to attend as delegates, that more rooms are booked as soon as possible. When asked what the "theme" was this year for convention, the Convention Chairman joked "Don't ever hold BCHMT convention in Great Falls in March"!!

Happy Trails, *Kathy Hundley*



Health & Training



Winter Feeding Easy Keeper and Hard Keeper Horses

Winter is here. Are you ready? Is your horse ready?

Understanding “Lower Critical Temperature (LCT)” will be important for caring and feeding your horse(s) properly. LCT is the temperature below which metabolic heat production must be increased to maintain body temperature.

For mature horses, their LCT will fall around 5°F for a horse with a thick coat and 41°F for a horse with a thin coat. Senior horses over 20 years old often have a thinner coat and will fall into a LCT of around



41°F. LCT for young horses ranges between 12°F for those with thicker coats and 32°F for thinner coats.

How to Feed as the Temperature Drops

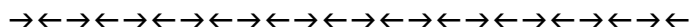
Forage is an essential part of every horse’s diet, whether an 18 hand Belgian or 13 hand Welsh pony. Equine digestive systems are designed to digest forage. As temperature drops in the colder months, not only do we need our normal supply of forage stocked in our barns, but we need to be prepared to feed more hay, should the winter conditions prove to be unforgiving this season.

For each decrease in coldness of 1°F below the critical temperature, there is an increase in digestible energy requirements for body temperature maintenance. Table 1 on website link provided shows the estimated feed energy increase at different magnitudes of cold below the lower critical temperature of mature horses.

For example, a horse with a thin coat and a LCT of 41°F, with no change in temperature (41°F), will have a 0 megacalories (Mcal) increase per day, therefore 0 pounds of feed intake increase per day.

Let’s say the temperature drops 20 degrees, so it is 21°F outside. In this case, your thin coated horse will need to increase their Mcals by 4, which means an increase of 4 pounds of forage per day to maintain body weight.

For more information and Table calculations visit: https://standleeforage.com/standlee-barn-bulletin/winter_feeding_easy_keeper_hard_keeper_horses



~DUTCH OVEN RECIPE ~

Giant Cinnamon Roll

(Easy)

Ingredients:

- 2 cans refrigerated cinnamon rolls (regular size)
- Parchment paper

Cut a piece of parchment paper to fit inside your Dutch oven. Open the cans of cinnamon rolls. Place one cinnamon roll in the very center of your parchment paper.

Unroll another cinnamon roll and wind it around the first cinnamon roll. Pinch the end of the first roll with the beginning of the second roll. Repeat

this process over and over until you get the desired size of the cinnamon roll. Carefully lift up the parchment paper and place it inside your Dutch oven (10” or 12”). Place six to eight pieces of charcoal underneath the Dutch oven and 8 to 12 on top of the Dutch oven. Bake for 15 to 25 minutes, depending on the heat of your coals. Use your nose to test for doneness. Once you smell cinnamon, it’s time to check the giant roll. Remove the parchment paper with the cinnamon roll on top from the Dutch oven. Drizzle the icing from the package all over the big pastry, cut or pull apart, eat and enjoy!

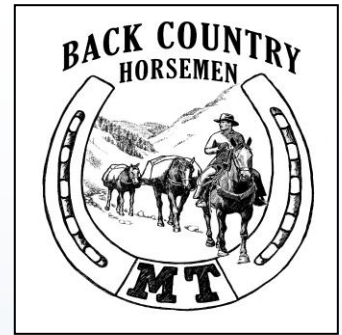


2018 BCHMT Officers

Chairman-Rich Carl
Vice Chairman- Sherri Lionberger
Treasurer-Dan Marsh
Secretary-Keni Hopkins
National Directors: Mark Himmel/Mack Long
Alternate: John Chepulis

BCHMT State Director's Meeting Highlights

December 1, 2018-Missoula
Attended by Trish Foster & Kathy Hundley



- ◆ **Vice President's Report:** (Sheri Lionberger)-The cost share agreement with the FS and BCHMT has been renewed, contributing \$9500. This will fund training (1st Aid/CPR/Saw) training in 2019
 - ◆ **National Director Report:** (Mark Himmel)-Reviewed action plans for national committees; Mark will run for BCHA National Treasurer, so will give up the media committee if elected.
 - ◆ There is a new grants committee taking the place of the Education Foundation.
 - ◆ **Forest & Travel Plan Revisions:** (Mack Long)-Bitterroot National Forest Plan begin 2020
 - ◆ 2019 State Convention-March 1-3 will be in Great Falls; sponsored by the Charlie Russell BCH. Convention packets were distributed, with raffle tickets and instructions for slide show picture submissions.
 - ◆ Erin Cook, new regional director for the MT Wilderness Association announced that there will be a Public Lands Rally in Helena on January 11, 2019.
 - ◆ Under the Education presentation, Ken Brown (Missoula) handed out laminated cards about bike/horse safety on the trails that can be handed out to bicyclists to inform them about proper etiquette when encountering horses. Joe Rogish (Bitterroot) made a motion to fund printing of these cards for continued use. Motion passed.
 - ◆ RTP Grant for 2018-Submit funding requests and data by December 14, for checks to be mailed sometime in January.
 - ◆ The Volunteer Year End Report showed that BCHMT chapters contributed stock and person hours valued at \$937,658.
 - ◆ Founders' Award-past recipients will choose the 2019 recipient.
 - ◆ Chuck Miller has defensive horsemanship cards.
 - ◆ Elections at the Convention-All current sitting officers are willing to do another term so will be on the ballot (Rich Carl, Sheri Lionberger, Dan Marsh), and will need to elect one National Director (Mack Long will not continue) and one Alternate National Director.
 - ◆ Convention Resolutions-Any resolutions to be considered at the 2019 Convention need to be given to Sheri Lionberger by January 4, 2019.
 - ◆ Greg Schatz has the new BCH Guidebook draft ready for review-will email out
 - ◆ The May 2019 BCHMT Board meeting will occur on the 18th at Gold Creek, east of Missoula.
- Submitted by Trish Foster, SPWBCH State Director

BIKES IN WILDERNESS STUDY AREA UPDATE LETTER RECEIVED FROM NORTHERN REGION FOREST SERVICE

Northern Region
26 Fort Missoula Rd
Missoula, MT 59804

December 4, 2018

Dear Objector,

My staff and I are reviewing the objections received for the Bitterroot Travel Plan-Mountain Biking in WSAs. I have decided to exercise my discretions under Title 36, Code of Federal Regulations, Part 218.26(b) [36 CFR 218.26(b)] to extend the time for the objection review. This will allow us to conduct a thorough review of the issues.

With this extension, I intend to issue my final written response by February 7, 2019. If you have any questions or need additional information please contact Cody Hutchinson, Regional Administrative Review Coordinator at (505)842-3233 or email crhutchinson@fs.fed.us. Thank you for your interest and involvement.

Sincerely,

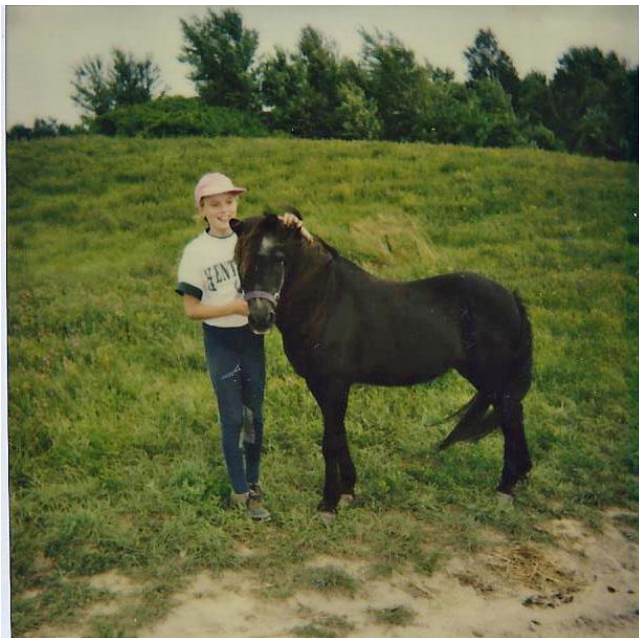
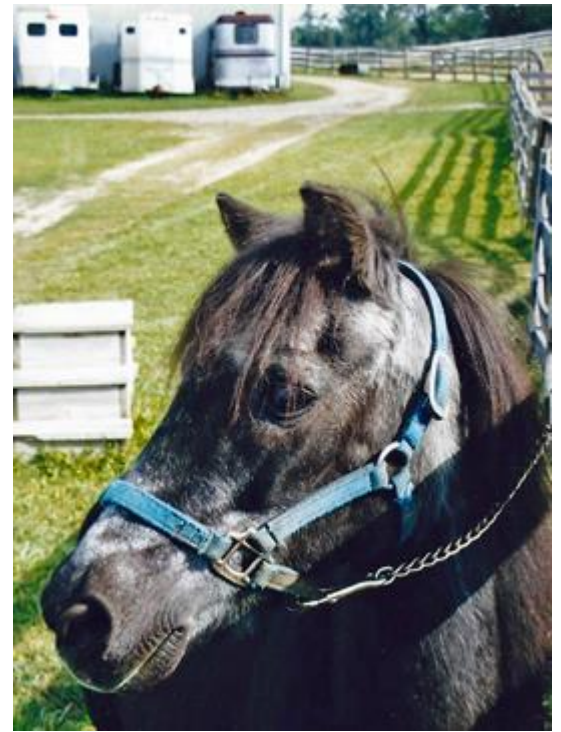
William Avey
Acting Deputy Regional Forester



OUR GIFT

By Patty Hascall

Children are the future of our sport no matter what the discipline. More likely than not a pony is in the future of most horse loving families as their families expand. I love ponies; even the evil little turds that have the sole purpose of teaching perseverance and that love knows no bounds.... Yes, I love them too. Fortunately we didn't have one of 'those'. Our pony was Princey, a stellar little Shetland fellow, black as coal and sent from heaven, blessed with a loving sense of humor and the patience of a saint. He was gifted to us at the age of 18 (or so) and we had him for another 18 wonderful years. He had never been sold in his little life, always got passed on to another child to love. We, however, could not fathom passing him along.



My daughter, at 5 years old, thought he was the only thing worth going to the barn for. She would groom him for hours, learned to saddle him and bridle him by herself and could mount after a fashion. They would disappear around the stable for hours and occasionally Princey would appear without her, clearly saying, "I am done for the day!" Grayson, my daughter, would be running after him giggling with an ear to ear grin. He taught her everything a pony should and then some. There was nothing better than walking into the barn to see his tiny little nose, bright luminous eyes blanketed in his forest of forelock with the tips of his ears buried in there somewhere as he nickered his welcome.

While we never passed him on to another child, Princey did go to many children when my daughter outgrew him. I was a Radiation Therapist and one of my patients was a young 8 year old boy whose only dream was

to have a pony. When it became clear that he was very ill we let them have our little miracle pony for the last months of his life. That sweet boy never missed a day in Princey's presence. Even when all he could do was stroke his nose and offer a treat, he found the courage to make Princey a priority. As I said, this pony was a gift from above. He always gave more than he ever got.

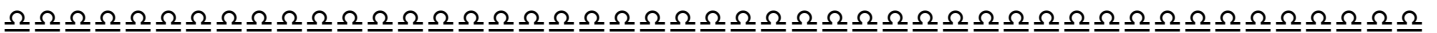
On the mischievous side, we thought he might make a good sitter for the farm's just weaned babies. Well it was a good thought, but not received well by our sweet (?) pony. His first and only reaction was a resounding 'NO!' as he promptly let them know that he may be little but he was mighty. He ran them right through the fence and commandeered the pasture as his own; he was not to be a nursemaid to young upstarts!

There were many children who got the chance to love on Princey, we made sure of that. But, we remained his owners for safe keeping until we lost him. There were





perhaps 30 young people and their parents who came to his memorial and a lot of tears. Touching lives is a gift. That is what our Princey was to so many... a gift.



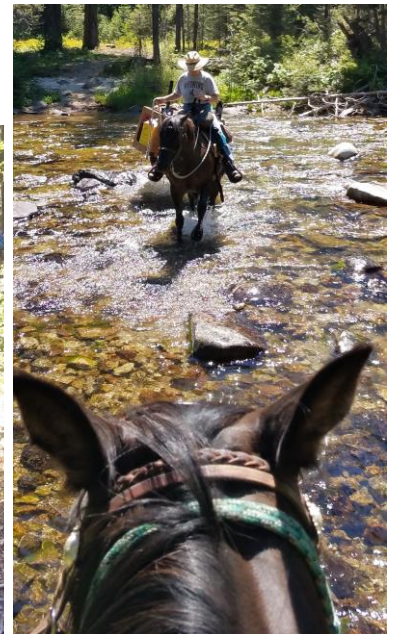
JASPER UPDATE Our 2015 BCHMT State Convention Raffle Mule

Rob Longwood of Florence, MT won our raffle mule, Jasper, in March 2015 when SPWBCH hosted their first convention. Jasper was a 2 year old at the time. I spoke with Rob a few weeks ago, and Jasper is doing great! Rob has 4 mules now and Jasper has been packing in the back country. Rob says he is still as gentle and sweet as he was back then. He also loves donuts!



South Fork Lost Horse July 22

SPWBCH members Joe & Kathy Hundley, Terry Reed and Carol Johns logged out the trail to the meadow and favorite lunch spot!



Linda Habeck sent a poem that she felt was appropriate as the end of the year closes. Quote:
“I saw it at an old F.S. building or museum near Sun Valley, Idaho on one of our trips many years ago and it comes to my mind so often. I've shared it with others, (mostly people not lucky enough to live where we do)”.

“That Poor Other Fellow”

Bob Limbert

Have you ever stood on the top of a mountain
and gazed down on the grandeur below
And thought of the vast army of people
Who never get out as we go?

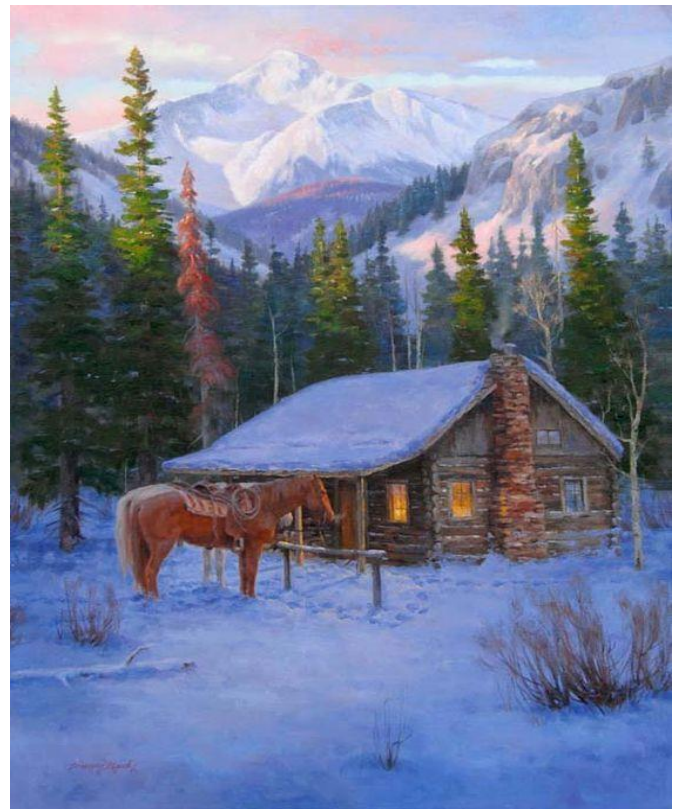
Have you ever trailed out into the desert,
Where the hills fade from gold to blue,
And then thought of some poor other fellow
Who would like to stand alongside of you?

Have you ever packed out into the mountains
Where the clouds twist around the peaks and unfurl,
And then thought of someone you know of
Who is penned up in the city's mad whirl?

Have you ever hooked onto a bull trout
And fought until your arms ache and pucker,
And then thought of the fellow back east
Who fishes all day for a s-sucker?

Have you ever slipped along on a deer trail,
Or tracked up to the lair of a bear,
And then thought of that poor other fellow
Who would give half of his life to stand there?

Have you ever followed the call of a hound dog
As he coursed over canyon or glen
Until he had worked out the puzzle
And ran the game down to its den?



Have you ever sat by the side of the campfire
And talked at the close of the day,
And then thought of that poor other fellow
Who would like to hear half what you say?

Have you ever thought of the thousands of people
Who never get out like you and I,
But spend their whole life in a city
To slowly wither, grow old and then-die?

Have you ever thought of the pleasure of living
Where all these things can be seen from your door,
And then thought of that poor other fellow
For whom life must be somewhat a bore?

Have you ever thought that such a life is not wasted,
And that to be bubbling over with health
Is much, much better than money
Yes! Much, much better than wealth?

Selway-Pintler Wilderness BCH 2018 Volunteer Hours

Trail Work: Basic hours 38; Skilled hours 137

Trail Miles (logging): 119 miles (26 wilderness)

Education: 142 hours

Travel Time: 111 hours

Stock Hauling: 1,955 miles Non-stock Miles: 1,297

Power Equipment hours: 7

Stock Used: 40 Stock Days: 56

Dollar Donations: \$680



**2018 BCHMT Youth Packing Camp
Indian Meadows ~ August 2-5**

BCH of MT hosted our first youth packing camp this summer. Eight students from around the state participated in learning packing and back country skills. The 2019 camp is scheduled for the first weekend in August.



Joni Packard-FS



Reba & Chance



DO desserts & Smoke's Wilderness chat



Selway- Pintler Wilderness BCH
P.O. Box 88
Hamilton MT 59840

To view in color go to:
www.bchmt.org/wp/spwbch/Newsletters.html



Remember-Please send me your stories and photos throughout the year if you would like to see them featured in the newsletter!
WELCOME NEW MEMBERS!



SPWBCH Bits and Spurs will now be printed quarterly.



Please help make our newsletter interesting, fun and informative by sending in articles, stories and photos! We love to read about your horses, mules, dogs, pack trips, campouts, hunting trips and good 'ole horse & mule sense! Trail history and updates are great too! Please send articles, news, pictures or horse/mule/back-country-related classifieds in to me for the quarterly newsletter at any time! Send to Kathy Hundley: 3448 Wright Way, Darby, MT 59829; prefer by e-mail: montanakath@yahoo.com

**Content of this newsletter shall not be reproduced in any form or manner without prior written agreement. This includes reproduction of articles, photos, and the SPWBCH logo.

MEMBERSHIP RENEWAL FORM

Please send to SPWBCH PO Box 88 Hamilton, MT 59840

Please Check One:

- Full Individual Membership-\$30.00** (includes state and national dues)
- Full Family Membership-\$40.00** (includes state and national dues)
- Chapter Only Individual Membership-\$15.00** (Your state and national dues must be collected by another chapter where you are a member.)
- Chapter Only Family Membership-\$20.00** (Your state and national dues must be collected by another chapter where you are a member.)

Name: _____ Family Members: _____

Address: _____

Phone #: _____ Cell #: _____

Email Address: _____

I wish to become/remain a member of the Selway-Pintler Wilderness Back Country Horsemen and have received, read and will abide by the Constitution and Bylaws of the SPWBCH.

Signature: _____ Date: _____

MEMBERSHIP RENEWALS ARE DUE-Your support helps to keep our trails open!

Watchtower campout ~ July 27 & 28

SPWBCH members took on this trail once again and it has become an annual tradition starting in 2010. Volunteers split into 2 crews and cleared out 94 logs. The Forest Service is in the process of engineering a new bridge, and we hope to partner with them. SPWBCH will submit for an RTP grant next year in hopes of obtaining some funding for the bridge.



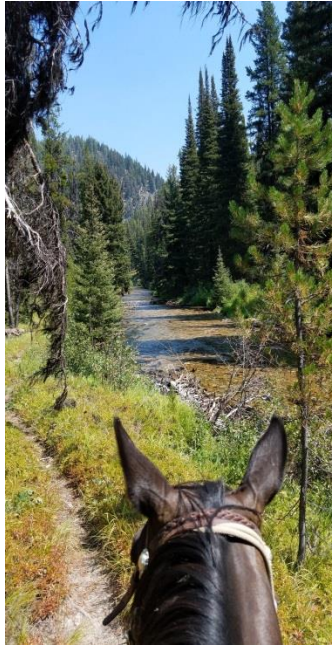
Thanksgiving Dutch Oven Cookout November 10 Lake Como

Members and guests and lots of dogs enjoyed the 10th annual holiday tradition by feasting on turkey, Dutch oven dishes and potluck sides at the Three Sisters Pavilion! Weather was very cold and snowy...but a good time was had by all!





Blue Joint Campout & Logging
August 11& 12
 SPWBCH took on this trail for the first time at the request of the FS. It was our first official project under the BCHMT RTP reimbursement grant. Members got a first-hand look at the pristine beauty of this trail, along with the devastation of the fires near the junction with Jack the Ripper trail.



Sawtooth-Again!
October 14
 Our final 2018 project attempting to make the old camp spot approx. 5 miles in. The fires have made it slow going-but as part of our BCHMT RTP grant SPWBCH can hopefully bring this trail back once again as we did in 2010.

